

Anti-PAK2 antibody (1-80) (STJ94946)

STJ94946

GENERAL INFORMATION

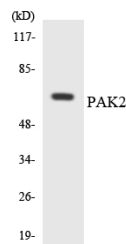
Product Type	Primary antibodies
Short Description	Rabbit polyclonal antibody anti-Serine/Threonine-Protein Kinase Pak 2 (1-80) is suitable for use in Western Blot, Immunohistochemistry, Immunofluorescence and ELISA research applications.
Applications	WB, IHC-P, IF-P, ELISA
Host/Source	Rabbit
Reactivity	Human, Mouse, Rat

PRODUCT PROPERTIES

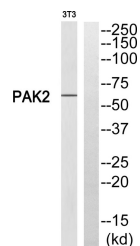
Clonality	Polyclonal
Clone ID	
Concentration	1 mg/mL
Conjugation	Unconjugated
Purification	The antibody was affinity-purified from rabbit anti-serum by affinity-chromatography.
Dilution Range	WB 1:500-1:2000 IHC 1:100-1:300 ELISA 1:5000
Formulation	PBS, 50% Glycerol, 0.5% BSA and 0.02% Sodium Azide.
Isotype	IgG
Storage Instruction	Store at -20°C for up to 1 year from the date of receipt, and avoid repeat freeze-thaw cycles.

TARGET INFORMATION

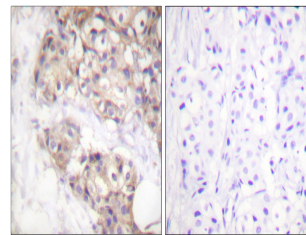
Gene ID	5062
Gene Symbol	PAK2
Uniprot ID	PAK2_HUMAN
Immunogen	The antiserum was produced against synthesized peptide derived from human PAK2 at amino acid range 5-54
Immunogen Region	1-80
Specificity	PAK2 polyclonal antibody (Serine/Threonine-Protein Kinase Pak 2) binds to endogenous Serine/Threonine-Protein Kinase Pak 2 at the amino acid region 1-80.
Immunogen Sequence	



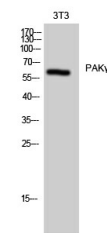
Western blot analysis of the lysates from COLO205 cells using PAK2 antibody.



Western blot analysis of PAK2 Antibody. The lane on the right is blocked with the PAK2 peptide.



Immunohistochemistry analysis of paraffin-embedded human brain, using PAK2 Antibody. The lane on the right is blocked with the PAK2 peptide.



Western blot analysis of 3T3 cells using PAK Gamma Polyclonal Antibody

This product is suitable for in-vitro studies under the RESEARCH USE ONLY [RUO] licence. This product must not be used as for diagnostic or other medical purposes.
St John's Laboratory Ltd, Knowledge Dock Business Centre, University Way, London, E16 2RD | Tel: 0208 223 3081