

Anti-PAK Alpha/Beta/Gamma antibody (80-160) (STJ94944)

STJ94944

GENERAL INFORMATION

Product Type	Primary antibodies
Short Description	Rabbit polyclonal antibody anti-Serine/threonine-protein kinase PAK 1 and Serine/threonine-protein kinase PAK 2 and Serine/threonine-protein kinase PAK 3 (80-160) is suitable for use in Immunohistochemistry, Immunofluorescence and ELISA research appl
Applications	IHC-P, IF-P, ELISA
Host/Source	Rabbit
Reactivity	Human, Mouse, Rat

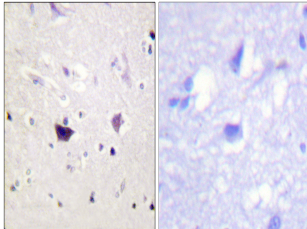
PRODUCT PROPERTIES

Clonality	Polyclonal
Clone ID	
Concentration	1 mg/mL
Conjugation	Unconjugated
Purification	The antibody was affinity-purified from rabbit anti-serum by affinity-chromatography.
Dilution Range	IHC 1:100-1:300 ELISA 1:5000
Formulation	PBS, 50% Glycerol, 0.5% BSA and 0.02% Sodium Azide.
Isotype	IgG
Storage Instruction	Store at -20°C for up to 1 year from the date of receipt, and avoid repeat freeze-thaw cycles.

TARGET INFORMATION

Gene ID [5062](#)
[5063](#)
[5058](#)
[PAK2](#)
[PAK3](#)
[PAK2_HUMAN](#)
[PAK3_HUMAN](#)
[PAK1_HUMAN](#)

Immunogen	The antiserum was produced against synthesized peptide derived from human PAK1/2/3 at amino acid range 111-160
Immunogen Region	80-160
Immunogen Specificity	PAK Alpha/Beta/Gamma polyclonal antibody (Serine/threonine-protein kinase PAK 1 and Serine/threonine-protein kinase PAK 2 and Serine/threonine-protein kinase PAK 3) binds to endogenous Serine/threonine-protein kinase PAK 1 and Serine/threonine-protein kinase PAK 2 and Serine/threonine-protein kinase PAK 3
Immunogen Sequence	



Immunohistochemistry analysis of paraffin-embedded human brain tissue, using PAK1/2/3 Antibody. The picture on the right is blocked with the synthesized peptide.

This product is suitable for in-vitro studies under the RESEARCH USE ONLY [RUO] licence. This product must not be used as for diagnostic or other medical purposes.
 St John's Laboratory Ltd, Knowledge Dock Business Centre, University Way, London, E16 2RD | Tel: 0208 223 3081