

Anti-PTAFR antibody (170-250 Internal) (STJ94931)

STJ94931

GENERAL INFORMATION

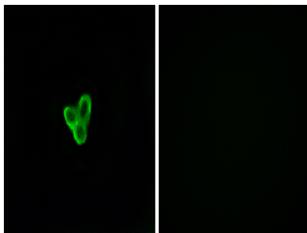
| | |
|--------------------------|--|
| Product Type | Primary antibodies |
| Short Description | Rabbit polyclonal antibody anti-Platelet-Activating Factor Receptor (170-250 Internal) is suitable for use in Immunofluorescence, Immunocytochemistry and ELISA research applications. |
| Applications | IF, ICC, ELISA |
| Host/Source | Rabbit |
| Reactivity | Human, Mouse, Rat |

PRODUCT PROPERTIES

| | |
|-----------------------|--|
| Clonality | Polyclonal |
| Clone ID | |
| Concentration | 1 mg/mL |
| Conjugation | Unconjugated |
| Purification | The antibody was affinity-purified from rabbit anti-serum by affinity-chromatography. |
| Dilution Range | IF 1:200-1:1000 ELISA 1:10000 |
| Formulation | PBS, 50% Glycerol, 0.5% BSA and 0.02% Sodium Azide. |
| Isotype | IgG |
| Storage | Store at -20°C for up to 1 year from the date of receipt, and avoid repeat freeze-thaw cycles. |
| Instruction | |

TARGET INFORMATION

| | |
|---------------------------|--|
| Gene ID | 5724 |
| Gene Symbol | PTAFR |
| Uniprot ID | PTAFR_HUMAN |
| Immunogen | The antiserum was produced against synthesized peptide derived from human PTAFR at amino acid range 194-243 |
| Immunogen Region | 170-250 Internal |
| Specificity | PTAFR polyclonal antibody (Platelet-Activating Factor Receptor) binds to endogenous Platelet-Activating Factor Receptor at the amino acid region 170-250 Internal. |
| Immunogen Sequence | |



Immunofluorescence analysis of LOVO cells, using PTAFR Antibody. The picture on the right is blocked with the synthesized peptide.