

Anti-PABPC5 antibody (160-240 Internal) (STJ94929)

STJ94929

GENERAL INFORMATION

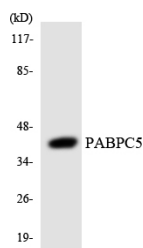
Product Type	Primary antibodies
Short Description	Rabbit polyclonal antibody anti-Polyadenylate-Binding Protein 5 (160-240 Internal) is suitable for use in Western Blot, Immunohistochemistry, Immunofluorescence and ELISA research applications.
Applications	WB, IHC-P, IF-P, ELISA
Host/Source	Rabbit
Reactivity	Human, Rat, Mouse

PRODUCT PROPERTIES

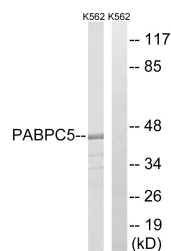
Clonality	Polyclonal
Clone ID	
Concentration	1 mg/mL
Conjugation	Unconjugated
Purification	The antibody was affinity-purified from rabbit anti-serum by affinity-chromatography.
Dilution Range	WB 1:500-1:2000 IHC 1:100-1:300 ELISA 1:10000
Formulation	PBS, 50% Glycerol, 0.5% BSA and 0.02% Sodium Azide.
Isotype	IgG
Storage Instruction	Store at -20°C for up to 1 year from the date of receipt, and avoid repeat freeze-thaw cycles.

TARGET INFORMATION

Gene ID	140886
Gene Symbol	PABPC5
Uniprot ID	PABP5_HUMAN
Immunogen	The antiserum was produced against synthesized peptide derived from human PABPC5 at amino acid range 184-233
Immunogen Region	160-240 Internal
Specificity	PABPC5 polyclonal antibody (Polyadenylate-Binding Protein 5) binds to endogenous Polyadenylate-Binding Protein 5 at the amino acid region 160-240 Internal.
Immunogen Sequence	



Western blot analysis of the lysates from HeLa cells using PABPC5 antibody.



Western blot analysis of lysates from K562 cells, using PABPC5 Antibody. The lane on the right is blocked with the synthesized peptide.

This product is suitable for in-vitro studies under the RESEARCH USE ONLY [RUO] licence. This product must not be used as for diagnostic or other medical purposes.
 St John's Laboratory Ltd, Knowledge Dock Business Centre, University Way, London, E16 2RD | Tel: 0208 223 3081