

Anti-PABPC3 antibody (330-410 Internal) (STJ94928)

STJ94928

GENERAL INFORMATION

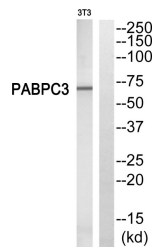
Product Type	Primary antibodies
Short Description	Rabbit polyclonal antibody anti-Polyadenylate-Binding Protein 3 (330-410 Internal) is suitable for use in Western Blot, Immunohistochemistry, Immunofluorescence and ELISA research applications.
Applications	WB, IHC-P, IF-P, ELISA
Host/Source	Rabbit
Reactivity	Human, Rat, Mouse

PRODUCT PROPERTIES

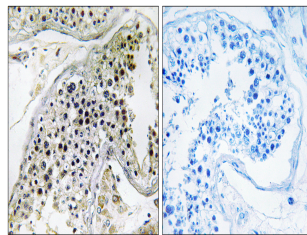
Clonality	Polyclonal
Clone ID	
Concentration	1 mg/mL
Conjugation	Unconjugated
Purification	The antibody was affinity-purified from rabbit anti-serum by affinity-chromatography.
Dilution Range	WB 1:500-1:2000 IHC1:50-300 ELISA 1:20000
Formulation	PBS, 50% Glycerol, 0.5% BSA and 0.02% Sodium Azide.
Isotype	IgG
Storage Instruction	Store at -20°C for up to 1 year from the date of receipt, and avoid repeat freeze-thaw cycles.

TARGET INFORMATION

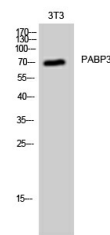
Gene ID	5042
Gene Symbol	PABPC3
Uniprot ID	PABP3_HUMAN
Immunogen	The antiserum was produced against synthesized peptide derived from human PABPC3 at amino acid range 352-401
Immunogen Region	330-410 Internal
Specificity	PABPC3 polyclonal antibody (Polyadenylate-Binding Protein 3) binds to endogenous Polyadenylate-Binding Protein 3 at the amino acid region 330-410 Internal.
Immunogen Sequence	



Western blot analysis of PABPC3 Antibody. The lane on the right is blocked with the PABPC3 peptide.



Immunohistochemistry analysis of paraffin-embedded human testis, using PABPC3 Antibody. The lane on the right is blocked with the PABPC3 peptide.



Western blot analysis of 3T3 cells using PABPC3 Polyclonal Antibody

This product is suitable for in-vitro studies under the RESEARCH USE ONLY [RUO] licence. This product must not be used as for diagnostic or other medical purposes.
St John's Laboratory Ltd, Knowledge Dock Business Centre, University Way, London, E16 2RD | Tel: 0208 223 3081