

Anti-RPS6KB1 antibody (230-310 Internal) (STJ94923)

STJ94923

GENERAL INFORMATION

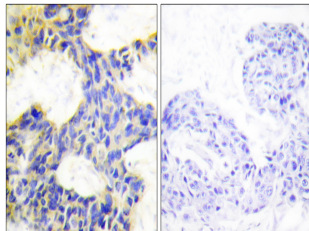
Product Type	Primary antibodies
Short Description	Rabbit polyclonal antibody anti-Ribosomal Protein S6 Kinase Beta-1 (230-310 Internal) is suitable for use in Western Blot, Immunohistochemistry, Immunofluorescence, Immunocytochemistry and ELISA research applications.
Applications	WB, IHC-P, IF, ICC, ELISA
Host/Source	Rabbit
Reactivity	Human, Mouse, Rat

PRODUCT PROPERTIES

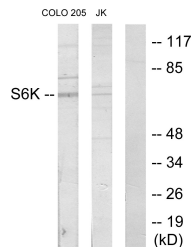
Clonality	Polyclonal
Clone ID	
Concentration	1 mg/mL
Conjugation	Unconjugated
Purification	The antibody was affinity-purified from rabbit anti-serum by affinity-chromatography.
Dilution Range	WB 1:500-1:2000 IHC 1:100-1:300 IF 1:200-1:1000 ELISA 1:10000
Formulation	PBS, 50% Glycerol, 0.5% BSA and 0.02% Sodium Azide.
Isotype	IgG
Storage Instruction	Store at -20°C for up to 1 year from the date of receipt, and avoid repeat freeze-thaw cycles.

TARGET INFORMATION

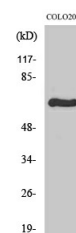
Gene ID	6198
Gene Symbol	RPS6KB1
Uniprot ID	KS6B1_HUMAN
Immunogen	The antiserum was produced against synthesized peptide derived from human S6K at amino acid range 261-310
Immunogen Region	230-310 Internal
Specificity	RPS6KB1 polyclonal antibody (Ribosomal Protein S6 Kinase Beta-1) binds to endogenous Ribosomal Protein S6 Kinase Beta-1 at the amino acid region 230-310 Internal.
Immunogen Sequence	



Immunohistochemistry analysis of paraffin-embedded human breast carcinoma tissue, using S6K Antibody. The picture on the right is blocked with the synthesized peptide.



Western blot analysis of lysates from COLO205 and Jurkat cells, using S6K Antibody. The lane on the right is blocked with the synthesized peptide.



Western blot analysis of various cells using p70 S6 kinase Alpha Polyclonal Antibody