

Anti-RPS6KB1 antibody (330-410) (STJ94919)

STJ94919

GENERAL INFORMATION

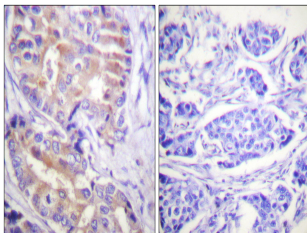
Product Type	Primary antibodies
Short Description	Rabbit polyclonal antibody anti-Ribosomal Protein S6 Kinase Beta-1 (330-410) is suitable for use in Immunohistochemistry, Immunofluorescence and ELISA research applications.
Applications	IHC-P, IF-P, ELISA
Host/Source	Rabbit
Reactivity	Human, Mouse, Rat

PRODUCT PROPERTIES

Clonality	Polyclonal
Clone ID	
Concentration	1 mg/mL
Conjugation	Unconjugated
Purification	The antibody was affinity-purified from rabbit anti-serum by affinity-chromatography.
Dilution Range	IHC 1:100-1:300 ELISA 1:5000
Formulation	PBS, 50% Glycerol, 0.5% BSA and 0.02% Sodium Azide.
Isotype	IgG
Storage	Store at -20°C for up to 1 year from the date of receipt, and avoid repeat freeze-thaw cycles.
Instruction	

TARGET INFORMATION

Gene ID	6198
Gene Symbol	RPS6KB1
Uniprot ID	KS6B1_HUMAN
Immunogen	The antiserum was produced against synthesized peptide derived from human p70 S6 Kinase at amino acid range 355-404
Immunogen Region	330-410
Specificity	RPS6KB1 polyclonal antibody (Ribosomal Protein S6 Kinase Beta-1) binds to endogenous Ribosomal Protein S6 Kinase Beta-1 at the amino acid region 330-410.
Immunogen Sequence	



Immunohistochemistry analysis of paraffin-embedded human breast carcinoma tissue, using p70 S6 Kinase Antibody. The picture on the right is blocked with the synthesized peptide.