

Anti-DDX5 antibody (540-620) (STJ94913)

STJ94913

GENERAL INFORMATION

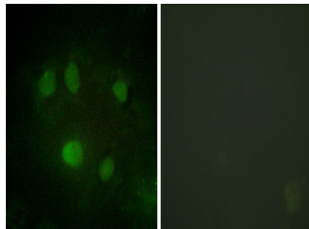
Product Type	Primary antibodies
Short Description	Rabbit polyclonal antibody anti-Probable Atp-Dependent Rna Helicase Ddx5 (540-620) is suitable for use in Western Blot, Immunofluorescence, Immunocytochemistry and ELISA research applications.
Applications	WB, IF, ICC, ELISA
Host/Source	Rabbit
Reactivity	Human, Mouse, Rat

PRODUCT PROPERTIES

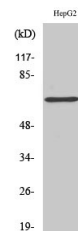
Clonality	Polyclonal
Clone ID	
Concentration	1 mg/mL
Conjugation	Unconjugated
Purification	The antibody was affinity-purified from rabbit anti-serum by affinity-chromatography.
Dilution Range	WB 1:500-1:2000 IF 1:200-1:1000 ELISA 1:20000
Formulation	PBS, 50% Glycerol, 0.5% BSA and 0.02% Sodium Azide.
Isotype	IgG
Storage Instruction	Store at -20°C for up to 1 year from the date of receipt, and avoid repeat freeze-thaw cycles.

TARGET INFORMATION

Gene ID	1655
Gene Symbol	DDX5
Uniprot ID	DDX5_HUMAN
Immunogen	The antiserum was produced against synthesized peptide derived from human DDX5/DEAD-box Protein 5 at amino acid range 565-614
Immunogen Region	540-620
Specificity	DDX5 polyclonal antibody (Probable Atp-Dependent Rna Helicase Ddx5) binds to endogenous Probable Atp-Dependent Rna Helicase Ddx5 at the amino acid region 540-620.
Immunogen Sequence	



Immunofluorescence analysis of HeLa cells, using DDX5/DEAD-box Protein 5 Antibody. The picture on the right is blocked with the synthesized peptide.



Western blot analysis of various cells using p68 RNA Helicase Polyclonal Antibody cells nucleus extracted by Minute TM Cytoplasmic and Nuclear Fractionation kit (SC-003, Inventibiotech, MN, USA).

This product is suitable for in-vitro studies under the RESEARCH USE ONLY [RUO] licence. This product must not be used as for diagnostic or other medical purposes.
St John's Laboratory Ltd, Knowledge Dock Business Centre, University Way, London, E16 2RD | Tel: 0208 223 3081