

Anti-CDKN1C antibody (30-110 N-Term) (STJ94910)

STJ94910

GENERAL INFORMATION

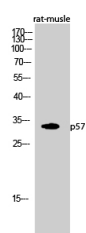
Product Type	Primary antibodies
Short Description	Rabbit polyclonal antibody anti-Cyclin-Dependent Kinase Inhibitor 1c (30-110 N-Term) is suitable for use in Western Blot, Immunohistochemistry, Immunofluorescence and ELISA research applications.
Applications	WB, IHC-P, IF-P, ELISA
Host/Source	Rabbit
Reactivity	Human, Rat, Mouse

PRODUCT PROPERTIES

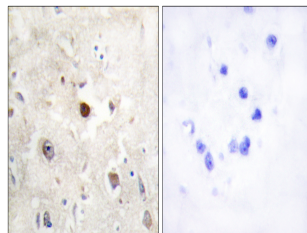
Clonality	Polyclonal
Clone ID	
Concentration	1 mg/mL
Conjugation	Unconjugated
Purification	The antibody was affinity-purified from rabbit anti-serum by affinity-chromatography.
Dilution	WB 1:500-1:2000
Range	IHC 1:100-1:300 ELISA 1:10000
Formulation	PBS, 50% Glycerol, 0.5% BSA and 0.02% Sodium Azide.
Isotype	IgG
Storage Instruction	Store at -20°C for up to 1 year from the date of receipt, and avoid repeat freeze-thaw cycles.

TARGET INFORMATION

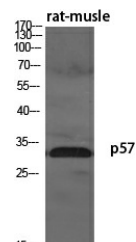
Gene ID	1028
Gene Symbol	CDKN1C
Uniprot ID	CDN1C_HUMAN
Immunogen	The antiserum was produced against synthesized peptide derived from human CDKN1C at amino acid range 11-60
Immunogen Region	30-110 N-Term
Specificity	CDKN1C polyclonal antibody (Cyclin-Dependent Kinase Inhibitor 1c) binds to endogenous Cyclin-Dependent Kinase Inhibitor 1c at the amino acid region 30-110 N-Term.
Immunogen Sequence	



Western blot analysis of rat-muscle cells using p57 Polyclonal Antibody diluted at 1: 500



Immunohistochemistry analysis of paraffin-embedded human brain, using p57KIP2 Antibody. The picture on the right is blocked with the synthesized peptide.



Western blot analysis of various cells using p57 Polyclonal Antibody diluted at 1: 500

This product is suitable for in-vitro studies under the RESEARCH USE ONLY [RUO] licence. This product must not be used as for diagnostic or other medical purposes.
St John's Laboratory Ltd, Knowledge Dock Business Centre, University Way, London, E16 2RD | Tel: 0208 223 3081