

Anti-RRM2B antibody (Internal) (STJ94908)

STJ94908

GENERAL INFORMATION

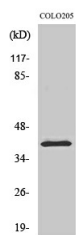
Product Type	Primary antibodies
Short Description	Rabbit polyclonal antibody anti-Ribonucleoside-Diphosphate Reductase Subunit M2 B (Internal) is suitable for use in Western Blot and ELISA research applications.
Applications	WB, ELISA
Host/Source	Rabbit
Reactivity	Human, Mouse, Rat

PRODUCT PROPERTIES

Clonality	Polyclonal
Clone ID	
Concentration	1 mg/mL
Conjugation	Unconjugated
Purification	The antibody was affinity-purified from rabbit anti-serum by affinity-chromatography.
Dilution Range	WB 1:500-1:2000 ELISA 1:40000
Formulation	PBS, 50% Glycerol, 0.5% BSA and 0.02% Sodium Azide.
Isotype	IgG
Storage	Store at -20°C for up to 1 year from the date of receipt, and avoid repeat freeze-thaw cycles.
Instruction	

TARGET INFORMATION

Gene ID	50484
Gene Symbol	RRM2B
Uniprot ID	R1R2B_HUMAN
Immunogen	Synthesized peptide derived from the Internal region of human p53R2.
Immunogen Region	Internal
Specificity	RRM2B polyclonal antibody (Ribonucleoside-Diphosphate Reductase Subunit M2 B) binds to endogenous Ribonucleoside-Diphosphate Reductase Subunit M2 B at the amino acid region Internal.
Immunogen Sequence	



Western blot analysis of various cells using p53R2 Polyclonal Antibody diluted at 1:2000

This product is suitable for in-vitro studies under the RESEARCH USE ONLY [RUO] licence. This product must not be used as for diagnostic or other medical purposes.
St John's Laboratory Ltd, Knowledge Dock Business Centre, University Way, London, E16 2RD | Tel: 0208 223 3081