

Anti-TP53 antibody (1-80) (STJ94898)

STJ94898

GENERAL INFORMATION

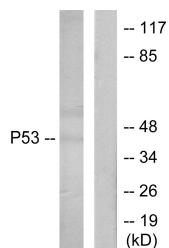
Product Type	Primary antibodies
Short Description	Rabbit polyclonal antibody anti-Cellular Tumor antigen P53 (1-80) is suitable for use in Western Blot and ELISA research applications.
Applications	WB, ELISA
Host/Source	Rabbit
Reactivity	Human, Mouse, Rat

PRODUCT PROPERTIES

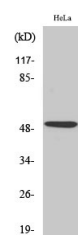
Clonality	Polyclonal
Clone ID	
Concentration	1 mg/mL
Conjugation	Unconjugated
Purification	The antibody was affinity-purified from rabbit anti-serum by affinity-chromatography.
Dilution Range	WB 1:500-1:2000 ELISA 1:20000
Formulation	PBS, 50% Glycerol, 0.5% BSA and 0.02% Sodium Azide.
Isotype	IgG
Storage Instruction	Store at -20°C for up to 1 year from the date of receipt, and avoid repeat freeze-thaw cycles.

TARGET INFORMATION

Gene ID	7157
Gene Symbol	TP53
Uniprot ID	P53_HUMAN
Immunogen	The antiserum was produced against synthesized peptide derived from human p53 at amino acid range 15-64
Immunogen Region	1-80
Specificity	TP53 polyclonal antibody (Cellular Tumor Antigen P53) binds to endogenous Cellular Tumor Antigen P53 at the amino acid region 1-80.
Immunogen Sequence	



Western blot analysis of lysates from Ovary cancer cells, using p53 Antibody. The lane on the right is blocked with the synthesized peptide.



Western blot analysis of various cells using p53 Polyclonal Antibody diluted at 1: 2000

This product is suitable for in-vitro studies under the RESEARCH USE ONLY [RUO] licence. This product must not be used as for diagnostic or other medical purposes.
St John's Laboratory Ltd, Knowledge Dock Business Centre, University Way, London, E16 2RD | Tel: 0208 223 3081