

## Anti-NCF1 antibody (310-390) (STJ94885)

STJ94885

### GENERAL INFORMATION

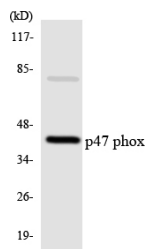
|                          |  |
|--------------------------|--|
| <b>Product Type</b>      | Primary antibodies   |
| <b>Short Description</b> | Rabbit polyclonal antibody anti-Neutrophil Cytosol Factor 1 (310-390) is suitable for use in Western Blot, Immunohistochemistry, Immunofluorescence and ELISA research applications. |
| <b>Applications</b>      | WB, IHC-P, IF-P, ELISA   |
| <b>Host/Source</b>       | Rabbit   |
| <b>Reactivity</b>        | Human, Mouse, Rat  |

### PRODUCT PROPERTIES

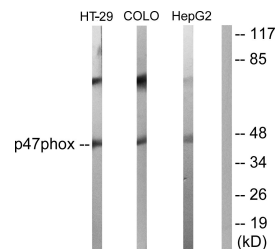
|                            |  |
|----------------------------|--|
| <b>Clonality</b>           | Polyclonal   |
| <b>Clone ID</b>            |  |
| <b>Concentration</b>       | 1 mg/mL  |
| <b>Conjugation</b>         | Unconjugated   |
| <b>Purification</b>        | The antibody was affinity-purified from rabbit anti-serum by affinity-chromatography.          |
| <b>Dilution Range</b>      | WB 1:500-1:2000<br>IHC 1:100-1:300<br>ELISA 1:5000   |
| <b>Formulation</b>         | PBS, 50% Glycerol, 0.5% BSA and 0.02% Sodium Azide.  |
| <b>Isotype</b>             | IgG  |
| <b>Storage Instruction</b> | Store at -20°C for up to 1 year from the date of receipt, and avoid repeat freeze-thaw cycles. |

### TARGET INFORMATION

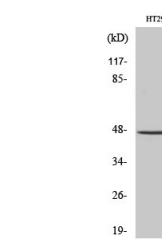
|                           |  |
|---------------------------|--|
| <b>Gene ID</b>            | 653361   |
| <b>Gene Symbol</b>        | NCF1   |
| <b>Uniprot ID</b>         | NCF1_HUMAN   |
| <b>Immunogen</b>          | The antiserum was produced against synthesized peptide derived from human p47 phox at amino acid range 341-390                           |
| <b>Immunogen Region</b>   | 310-390  |
| <b>Specificity</b>        | NCF1 polyclonal antibody (Neutrophil Cytosol Factor 1) binds to endogenous Neutrophil Cytosol Factor 1 at the amino acid region 310-390. |
| <b>Immunogen Sequence</b> |  |



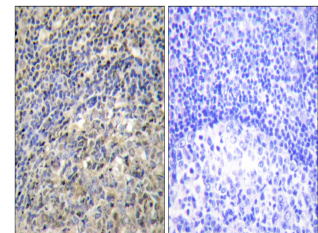
Western blot analysis of the lysates from COLO205 cells using p47 phox antibody.



Western blot analysis of lysates from HT-29, COLO205, and HepG2 cells, using p47 phox Antibody. The lane on the right is blocked with the synthesized peptide.



Western blot analysis of COLO205 cells using p47-phox Polyclonal Antibody



Immunohistochemistry analysis of paraffin-embedded human tonsil tissue, using p47 phox Antibody. The picture on the right is blocked with the synthesized peptide.