

Anti-NCF4 antibody (90-170) (STJ94881)

STJ94881

GENERAL INFORMATION

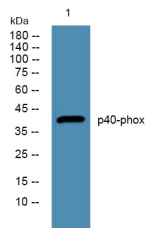
| | |
|--------------------------|---|
| Product Type | Primary antibodies |
| Short Description | Rabbit polyclonal antibody anti-Neutrophil Cytosol Factor 4 (90-170) is suitable for use in Immunohistochemistry, Immunofluorescence, Western Blot and ELISA research applications. |
| Applications | IHC-P, IF-P, WB, ELISA |
| Host/Source | Rabbit |
| Reactivity | Human, Mouse |

PRODUCT PROPERTIES

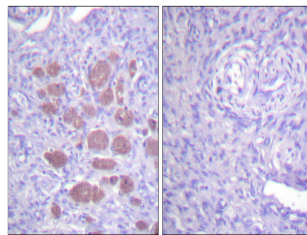
| | |
|----------------------------|--|
| Clonality | Polyclonal |
| Clone ID | |
| Concentration | 1 mg/mL |
| Conjugation | Unconjugated |
| Purification | The antibody was affinity-purified from rabbit anti-serum by affinity-chromatography. |
| Dilution Range | WB 1:500-2000 IHC 1:100-1:300 ELISA 1:10000 |
| Formulation | PBS, 50% Glycerol, 0.5% BSA and 0.02% Sodium Azide. |
| Isotype | IgG |
| Storage Instruction | Store at -20°C for up to 1 year from the date of receipt, and avoid repeat freeze-thaw cycles. |

TARGET INFORMATION

| | |
|---------------------------|---|
| Gene ID | 4689 |
| Gene Symbol | NCF4 |
| Uniprot ID | NCF4_HUMAN |
| Immunogen | The antiserum was produced against synthesized peptide derived from human p40 phox at amino acid range 120-169 |
| Immunogen Region | 90-170 |
| Specificity | NCF4 polyclonal antibody (Neutrophil Cytosol Factor 4) binds to endogenous Neutrophil Cytosol Factor 4 at the amino acid region 90-170. |
| Immunogen Sequence | |



Western blot analysis of lysates from K562 cells, primary antibody was diluted at 1:1000, 4°C over night



Immunohistochemistry analysis of paraffin-embedded human ovary tissue, using p40 phox Antibody. The picture on the right is blocked with the synthesized peptide.