

## Anti-MAPK14 antibody (120-200) (STJ94877)

STJ94877

### GENERAL INFORMATION

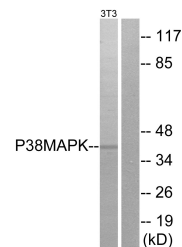
<b>Product Type</b>	Primary antibodies
<b>Short Description</b>	Rabbit polyclonal antibody anti-Mitogen-Activated Protein Kinase 14 (120-200) is suitable for use in Western Blot, Immunohistochemistry, Immunofluorescence, Immunocytochemistry and ELISA research applications.
<b>Applications</b>	WB, IHC-P, IF, ICC, ELISA
<b>Host/Source</b>	Rabbit
<b>Reactivity</b>	Human, Mouse, Rat

### PRODUCT PROPERTIES

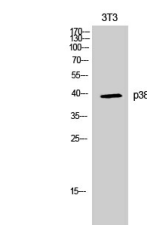
<b>Clonality</b>	Polyclonal
<b>Clone ID</b>	
<b>Concentration</b>	1 mg/mL
<b>Conjugation</b>	Unconjugated
<b>Purification</b>	The antibody was affinity-purified from rabbit anti-serum by affinity-chromatography.
<b>Dilution Range</b>	WB 1:500-1:2000 IHC 1:100-1:300 IF 1:200-1:1000 ELISA 1:20000
<b>Formulation</b>	PBS, 50% Glycerol, 0.5% BSA and 0.02% Sodium Azide.
<b>Isotype</b>	IgG
<b>Storage Instruction</b>	Store at -20°C for up to 1 year from the date of receipt, and avoid repeat freeze-thaw cycles.

### TARGET INFORMATION

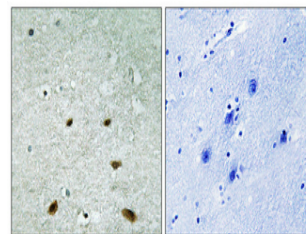
<b>Gene ID</b>	1432
<b>Gene Symbol</b>	MAPK14
<b>Uniprot ID</b>	MK14_HUMAN
<b>Immunogen</b>	The antiserum was produced against synthesized peptide derived from human p38 MAPK at amino acid range 157-206
<b>Immunogen Region</b>	120-200
<b>Specificity</b>	MAPK14 polyclonal antibody (Mitogen-Activated Protein Kinase 14) binds to endogenous Mitogen-Activated Protein Kinase 14 at the amino acid region 120-200.
<b>Immunogen Sequence</b>	



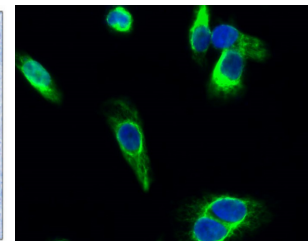
Western blot analysis of lysates from NIH/3T3 cells, treated with UV, using p38 MAPK Antibody. The lane on the right is blocked with the synthesized peptide.



Western blot analysis of NIH-3T3 cells using p38 Polyclonal Antibody



Immunohistochemical analysis of paraffin-embedded Human brain. Antibody was diluted at 1:100 (4°C overnight). High-pressure and temperature Tris-EDTA, pH8.0 was used for antigen retrieval. Negative control (right) obtained from antibody was pre-absorbed by immunogen peptide.



Immunofluorescence analysis of HeLa cell. 1. p38 Polyclonal Antibody (green) was diluted at 1:200 (4°C overnight). 2. Goat Anti Rabbit Alexa Fluor 488 Catalog: (NA was diluted at 1:1000 (room temperature, 50min). 3 DAPI (blue) 10min.

This product is suitable for in-vitro studies under the RESEARCH USE ONLY [RUO] licence. This product must not be used as for diagnostic or other medical purposes.  
St John's Laboratory Ltd, Knowledge Dock Business Centre, University Way, London, E16 2RD | Tel: 0208 223 3081