

Anti-MAPK14 antibody (120-200) (STJ94876)

STJ94876

GENERAL INFORMATION

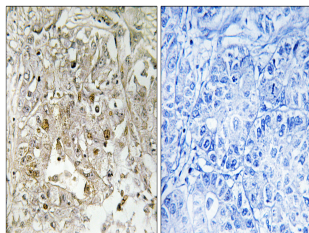
Product Type	Primary antibodies
Short Description	Rabbit polyclonal antibody anti-Mitogen-Activated Protein Kinase 14 (120-200) is suitable for use in Western Blot, Immunohistochemistry, Immunofluorescence and ELISA research applications.
Applications	WB, IHC-P, IF-P, ELISA
Host/Source	Rabbit
Reactivity	Human, Mouse, Rat

PRODUCT PROPERTIES

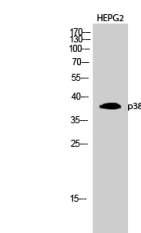
Clonality	Polyclonal
Clone ID	
Concentration	1 mg/mL
Conjugation	Unconjugated
Purification	The antibody was affinity-purified from rabbit anti-serum by affinity-chromatography.
Dilution Range	WB 1:3000-1:8000 IHC 1:100-1:300 ELISA 1:5000
Formulation	PBS, 50% Glycerol, 0.5% BSA and 0.02% Sodium Azide.
Isotype	IgG
Storage Instruction	Store at -20°C for up to 1 year from the date of receipt, and avoid repeat freeze-thaw cycles.

TARGET INFORMATION

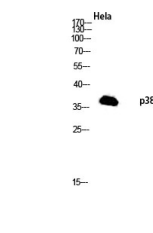
Gene ID	1432
Gene Symbol	MAPK14
Uniprot ID	MK14_HUMAN
Immunogen	The antiserum was produced against synthesized peptide derived from human p38 MAPK at amino acid range 151-200
Immunogen Region	120-200
Specificity	MAPK14 polyclonal antibody (Mitogen-Activated Protein Kinase 14) binds to endogenous Mitogen-Activated Protein Kinase 14 at the amino acid region 120-200.
Immunogen Sequence	



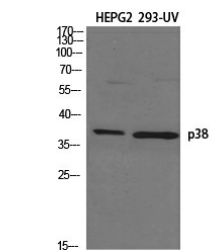
Immunohistochemistry analysis of paraffin-embedded human liver carcinoma tissue, using p38 MAPK Antibody. The picture on the right is blocked with the synthesized peptide.



Western blot analysis of HEPG2 cells using p38 Polyclonal Antibody diluted at 1: 3000



Western blot analysis of HeLa lysis using p38 antibody. Antibody was diluted at 1:3000



Western blot analysis of various cells using p38 Polyclonal Antibody diluted at 1: 3000

This product is suitable for in-vitro studies under the RESEARCH USE ONLY [RUO] licence. This product must not be used as for diagnostic or other medical purposes.
St John's Laboratory Ltd, Knowledge Dock Business Centre, University Way, London, E16 2RD | Tel: 0208 223 3081