

## Anti-NREP antibody (30-110 Internal) (STJ94874)

STJ94874

### GENERAL INFORMATION

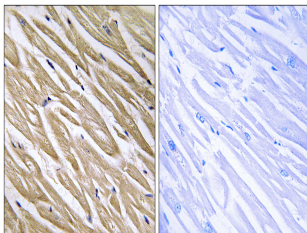
<b>Product Type</b>	Primary antibodies
<b>Short Description</b>	Rabbit polyclonal antibody anti-Neuronal Regeneration-Related Protein (30-110 Internal) is suitable for use in Immunohistochemistry, Immunofluorescence and ELISA research applications.
<b>Applications</b>	IHC-P, IF-P, ELISA
<b>Host/Source</b>	Rabbit
<b>Reactivity</b>	Human, Mouse, Rat

### PRODUCT PROPERTIES

<b>Clonality</b>	Polyclonal
<b>Clone ID</b>	
<b>Concentration</b>	1 mg/mL
<b>Conjugation</b>	Unconjugated
<b>Purification</b>	The antibody was affinity-purified from rabbit anti-serum by affinity-chromatography.
<b>Dilution Range</b>	IHC 1:100-1:300 ELISA 1:40000
<b>Formulation</b>	PBS, 50% Glycerol, 0.5% BSA and 0.02% Sodium Azide.
<b>Isotype</b>	IgG
<b>Storage Instruction</b>	Store at -20°C for up to 1 year from the date of receipt, and avoid repeat freeze-thaw cycles.

### TARGET INFORMATION

<b>Gene ID</b>	<a href="#">9315</a>
<b>Gene Symbol</b>	<a href="#">NREP</a>
<b>Uniprot ID</b>	<a href="#">NREP_HUMAN</a>
<b>Immunogen</b>	The antiserum was produced against synthesized peptide derived from human C5orf13 at amino acid range 13-62
<b>Immunogen Region</b>	30-110 Internal
<b>Specificity</b>	NREP polyclonal antibody (Neuronal Regeneration-Related Protein) binds to endogenous Neuronal Regeneration-Related Protein at the amino acid region 30-110 Internal.
<b>Immunogen Sequence</b>	



Immunohistochemistry analysis of paraffin-embedded human heart tissue, using C5orf13 Antibody. The picture on the right is blocked with the synthesized peptide.