

Anti-P2RY4 antibody (130-210 Internal) (STJ94871)

STJ94871

GENERAL INFORMATION

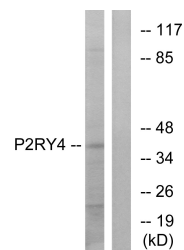
Product Type	Primary antibodies
Short Description	Rabbit polyclonal antibody anti-P2y Purinoceptor 4 (130-210 Internal) is suitable for use in Western Blot, Immunofluorescence, Immunocytochemistry and ELISA research applications.
Applications	WB, IF, ICC, ELISA
Host/Source	Rabbit
Reactivity	Human, Mouse, Rat

PRODUCT PROPERTIES

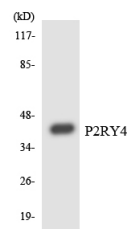
Clonality	Polyclonal
Clone ID	
Concentration	1 mg/mL
Conjugation	Unconjugated
Purification	The antibody was affinity-purified from rabbit anti-serum by affinity-chromatography.
Dilution Range	WB 1:500-1:2000 IF 1:200-1:1000 ELISA 1:10000
Formulation	PBS, 50% Glycerol, 0.5% BSA and 0.02% Sodium Azide.
Isotype	IgG
Storage Instruction	Store at -20°C for up to 1 year from the date of receipt, and avoid repeat freeze-thaw cycles.

TARGET INFORMATION

Gene ID	5030
Gene Symbol	P2RY4
Uniprot ID	P2RY4_HUMAN
Immunogen	The antiserum was produced against synthesized peptide derived from human P2RY4 at amino acid range 159-208
Region	130-210 Internal
Specificity	P2RY4 polyclonal antibody (P2y Purinoceptor 4) binds to endogenous P2y Purinoceptor 4 at the amino acid region 130-210 Internal.
Immunogen Sequence	



Western blot analysis of lysates from HeLa cells, using P2RY4 Antibody. The lane on the right is blocked with the synthesized peptide.



Western blot analysis of the lysates from COLO205 cells using P2RY4 antibody.



Western blot analysis of various cells using P2RY4 Polyclonal Antibody diluted at 1: 500