

Anti-P2RY11 antibody (110-190 Internal) (STJ94870)

STJ94870

GENERAL INFORMATION

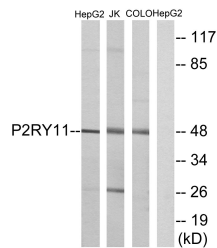
Product Type	Primary antibodies
Short Description	Rabbit polyclonal antibody anti-P2y Purinoceptor 11 (110-190 Internal) is suitable for use in Western Blot and ELISA research applications.
Applications	WB, ELISA
Host/Source	Rabbit
Reactivity	Human, Rat, Mouse

PRODUCT PROPERTIES

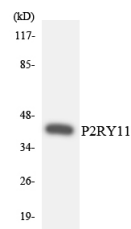
Clonality	Polyclonal
Clone ID	
Concentration	1 mg/mL
Conjugation	Unconjugated
Purification	The antibody was affinity-purified from rabbit anti-serum by affinity-chromatography.
Dilution Range	WB 1:500-1:2000 ELISA 1:10000
Formulation	PBS, 50% Glycerol, 0.5% BSA and 0.02% Sodium Azide.
Isotype	IgG
Storage Instruction	Store at -20°C for up to 1 year from the date of receipt, and avoid repeat freeze-thaw cycles.

TARGET INFORMATION

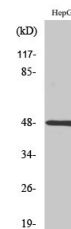
Gene ID	5032
Gene Symbol	P2RY11
Uniprot ID	P2Y11_HUMAN
Immunogen	The antiserum was produced against synthesized peptide derived from human P2RY11 at amino acid range 140-189
Immunogen Region	110-190 Internal
Specificity	P2RY11 polyclonal antibody (P2y Purinoceptor 11) binds to endogenous P2y Purinoceptor 11 at the amino acid region 110-190 Internal.
Immunogen Sequence	



Western blot analysis of lysates from HepG2, Jurkat, and COLO cells, using P2RY11 Antibody. The lane on the right is blocked with the synthesized peptide.



Western blot analysis of the lysates from K562 cells using P2RY11 antibody.



Western blot analysis of various cells using P2Y11 Polyclonal Antibody.

This product is suitable for in-vitro studies under the RESEARCH USE ONLY [RUO] licence. This product must not be used as for diagnostic or other medical purposes.
St John's Laboratory Ltd, Knowledge Dock Business Centre, University Way, London, E16 2RD | Tel: 0208 223 3081