

## Anti-P2RY8 antibody (170-250 Internal) (STJ94869)

STJ94869

### GENERAL INFORMATION

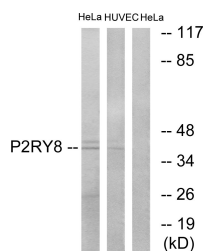
<b>Product Type</b>	Primary antibodies
<b>Short Description</b>	Rabbit polyclonal antibody anti-P2y Purinoceptor 8 (170-250 Internal) is suitable for use in Western Blot, Immunofluorescence, Immunocytochemistry and ELISA research applications.
<b>Applications</b>	WB, IF, ICC, ELISA
<b>Host/Source</b>	Rabbit
<b>Reactivity</b>	Human, Rat, Mouse

### PRODUCT PROPERTIES

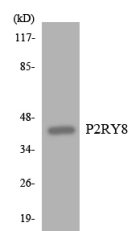
<b>Clonality</b>	Polyclonal
<b>Clone ID</b>	
<b>Concentration</b>	1 mg/mL
<b>Conjugation</b>	Unconjugated
<b>Purification</b>	The antibody was affinity-purified from rabbit anti-serum by affinity-chromatography.
<b>Dilution Range</b>	WB 1:500-1:2000 IF 1:200-1:1000 ELISA 1:20000
<b>Formulation</b>	PBS, 50% Glycerol, 0.5% BSA and 0.02% Sodium Azide.
<b>Isotype</b>	IgG
<b>Storage Instruction</b>	Store at -20°C for up to 1 year from the date of receipt, and avoid repeat freeze-thaw cycles.

### TARGET INFORMATION

<b>Gene ID</b>	286530
<b>Gene Symbol</b>	P2RY8
<b>Uniprot ID</b>	P2RY8_HUMAN
<b>Immunogen</b>	The antiserum was produced against synthesized peptide derived from human P2RY8 at amino acid range 192-241
<b>Region</b>	170-250 Internal
<b>Specificity</b>	P2RY8 polyclonal antibody (P2y Purinoceptor 8) binds to endogenous P2y Purinoceptor 8 at the amino acid region 170-250 Internal.
<b>Immunogen Sequence</b>	



Western blot analysis of lysates from HeLa and HUVEC cells, using P2RY8 Antibody. The lane on the right is blocked with the synthesized peptide.



Western blot analysis of the lysates from COLO205 cells using P2RY8 antibody.



Western blot analysis of various cells using P2RY8 Polyclonal Antibody diluted at 1: 2000