

Anti-CDKN1B antibody (140-220) (STJ94866)

STJ94866

GENERAL INFORMATION

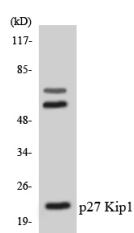
Product Type	Primary antibodies
Short Description	Rabbit polyclonal antibody anti-Cyclin-Dependent Kinase Inhibitor 1b (140-220) is suitable for use in Western Blot, Immunohistochemistry, Immunofluorescence and ELISA research applications.
Applications	WB, IHC-P, IF-P, ELISA
Host/Source	Rabbit
Reactivity	Human, Rat, Mouse

PRODUCT PROPERTIES

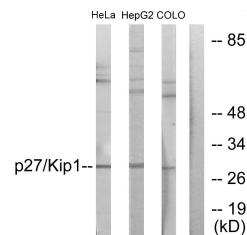
Clonality	Polyclonal
Clone ID	
Concentration	1 mg/mL
Conjugation	Unconjugated
Purification	The antibody was affinity-purified from rabbit anti-serum by affinity-chromatography.
Dilution Range	WB 1:500-2000 ELISA 1:10000-20000 IHC 1:50-300
Formulation	PBS, 50% Glycerol, 0.5% BSA and 0.02% Sodium Azide.
Isotype	IgG
Storage Instruction	Store at -20°C for up to 1 year from the date of receipt, and avoid repeat freeze-thaw cycles.

TARGET INFORMATION

Gene ID	1027
Gene Symbol	CDKN1B
Uniprot ID	CDN1B_HUMAN
Immunogen	The antiserum was produced against synthesized peptide derived from human p27 Kip1 at amino acid range 149-198
Immunogen Region	140-220
Specificity	CDKN1B polyclonal antibody (Cyclin-Dependent Kinase Inhibitor 1b) binds to endogenous Cyclin-Dependent Kinase Inhibitor 1b at the amino acid region 140-220.
Immunogen Sequence	



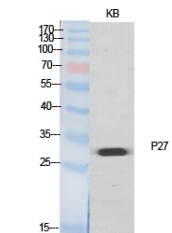
Western blot analysis of the lysates from Jurkat cells using p27 Kip1 antibody.



Western blot analysis of lysates from HeLa, HepG2, and COLO205 cells, using p27 Kip1 Antibody. The lane on the right is blocked with the synthesized peptide.



Western blot analysis of COLO205 cells using p27 Polyclonal Antibody diluted at 1: 500



Western blot analysis of various cells using p27 Polyclonal Antibody diluted at 1: 500

This product is suitable for in-vitro studies under the RESEARCH USE ONLY [RUO] licence. This product must not be used as for diagnostic or other medical purposes.
St John's Laboratory Ltd, Knowledge Dock Business Centre, University Way, London, E16 2RD | Tel: 0208 223 3081