

Anti-CDKN2C antibody (80-160 C-Term) (STJ94860)

STJ94860

GENERAL INFORMATION

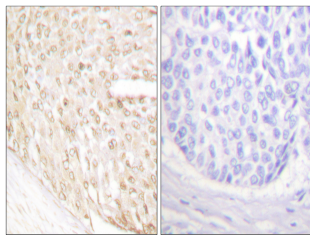
Product Type	Primary antibodies
Short Description	Rabbit polyclonal antibody anti-Cyclin-Dependent Kinase 4 Inhibitor C (80-160 C-Term) is suitable for use in Western Blot, Immunohistochemistry, Immunofluorescence and ELISA research applications.
Applications	WB, IHC-P, IF-P, ELISA
Host/Source	Rabbit
Reactivity	Human, Mouse, Monkey

PRODUCT PROPERTIES

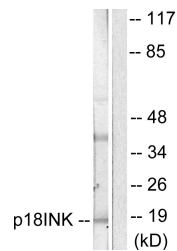
Clonality	Polyclonal
Clone ID	
Concentration	1 mg/mL
Conjugation	Unconjugated
Purification	The antibody was affinity-purified from rabbit anti-serum by affinity-chromatography.
Dilution Range	WB 1:500-1:2000 IHC 1:100-1:300 ELISA 1:20000
Formulation	PBS, 50% Glycerol, 0.5% BSA and 0.02% Sodium Azide.
Isotype	IgG
Storage Instruction	Store at -20°C for up to 1 year from the date of receipt, and avoid repeat freeze-thaw cycles.

TARGET INFORMATION

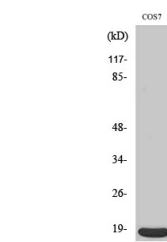
Gene ID	1031
Gene Symbol	CDKN2C
Uniprot ID	CDN2C_HUMAN
Immunogen	The antiserum was produced against synthesized peptide derived from human p18 INK at amino acid range 111-160
Immunogen Region	80-160 C-Term
Specificity	CDKN2C polyclonal antibody (Cyclin-Dependent Kinase 4 Inhibitor C) binds to endogenous Cyclin-Dependent Kinase 4 Inhibitor C at the amino acid region 80-160 C-Term.
Immunogen Sequence	



Immunohistochemistry analysis of paraffin-embedded human breast carcinoma tissue, using p18 INK Antibody. The picture on the right is blocked with the synthesized peptide.



Western blot analysis of lysates from COS7 cells, using p18 INK Antibody. The lane on the right is blocked with the synthesized peptide.



Western blot analysis of various cells using p18 Polyclonal Antibody