

Anti-BCAR1 antibody (350-430) (STJ94854)

STJ94854

GENERAL INFORMATION

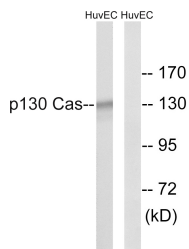
| | |
|--------------------------|---|
| Product Type | Primary antibodies |
| Short Description | Rabbit polyclonal antibody anti-Breast Cancer anti-Estrogen Resistance Protein 1 (350-430) is suitable for use in Western Blot, Immunohistochemistry, Immunofluorescence and ELISA research applications. |
| Applications | WB, IHC-P, IF-P, ELISA |
| Host/Source | Rabbit |
| Reactivity | Human, Mouse, Rat |

PRODUCT PROPERTIES

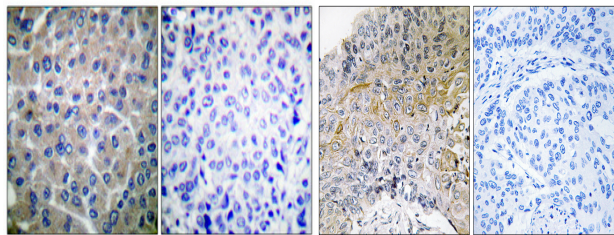
| | |
|----------------------------|--|
| Clonality | Polyclonal |
| Clone ID | |
| Concentration | 1 mg/mL |
| Conjugation | Unconjugated |
| Purification | The antibody was affinity-purified from rabbit anti-serum by affinity-chromatography. |
| Dilution Range | WB 1:500-1:2000 IHC 1:100-1:300 ELISA 1:5000 |
| Formulation | PBS, 50% Glycerol, 0.5% BSA and 0.02% Sodium Azide. |
| Isotype | IgG |
| Storage Instruction | Store at -20°C for up to 1 year from the date of receipt, and avoid repeat freeze-thaw cycles. |

TARGET INFORMATION

| | |
|---------------------------|---|
| Gene ID | 9564 |
| Gene Symbol | BCAR1 |
| Uniprot ID | BCAR1_HUMAN |
| Immunogen Region | The antiserum was produced against synthesized peptide derived from human p130 Cas at amino acid range 376-425 |
| Immunogen Region | 350-430 |
| Specificity | BCAR1 polyclonal antibody (Breast Cancer Anti-Estrogen Resistance Protein 1) binds to endogenous Breast Cancer Anti-Estrogen Resistance Protein 1 at the amino acid region 350-430. |
| Immunogen Sequence | |

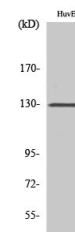


Western blot analysis of lysates from HUVEC cells, using p130 Cas Antibody. The lane on the right is blocked with the synthesized peptide.



Immunohistochemical analysis of paraffin-embedded Human breast cancer. Antibody was diluted at 1:100 (4°C overnight). High-pressure and temperature Tris-EDTA, pH8.0 was used for antigen retrieval. Negative control (right) obtained from antibody was pre-absorbed by immunogen peptide.

Immunohistochemistry analysis of paraffin-embedded human breast carcinoma tissue, using p130 Cas Antibody. The picture on the right is blocked with the synthesized peptide.



Western blot analysis of various cells using p130 Cas Polyclonal Antibody

This product is suitable for in-vitro studies under the RESEARCH USE ONLY [RUO] licence. This product must not be used as for diagnostic or other medical purposes.
St John's Laboratory Ltd, Knowledge Dock Business Centre, University Way, London, E16 2RD | Tel: 0208 223 3081