

Anti-RBL2 antibody (890-970) (STJ94852)

STJ94852

GENERAL INFORMATION

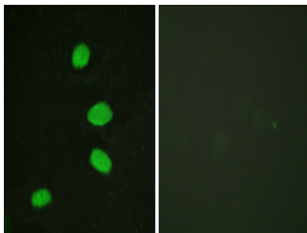
Product Type	Primary antibodies
Short Description	Rabbit polyclonal antibody anti-Retinoblastoma-Like Protein 2 (890-970) is suitable for use in Immunofluorescence, Immunocytochemistry and ELISA research applications.
Applications	IF, ICC, ELISA
Host/Source	Rabbit
Reactivity	Human, Mouse, Rat

PRODUCT PROPERTIES

Clonality	Polyclonal
Clone ID	
Concentration	1 mg/mL
Conjugation	Unconjugated
Purification	The antibody was affinity-purified from rabbit anti-serum by affinity-chromatography.
Dilution Range	IF 1:200-1:1000 ELISA 1:5000
Formulation	PBS, 50% Glycerol, 0.5% BSA and 0.02% Sodium Azide.
Isotype	IgG
Storage	Store at -20°C for up to 1 year from the date of receipt, and avoid repeat freeze-thaw cycles.
Instruction	

TARGET INFORMATION

Gene ID	5934
Gene Symbol	RBL2
Uniprot ID	RBL2_HUMAN
Immunogen	The antiserum was produced against synthesized peptide derived from human RBL2 at amino acid range 918-967
Immunogen Region	890-970
Specificity	RBL2 polyclonal antibody (Retinoblastoma-Like Protein 2) binds to endogenous Retinoblastoma-Like Protein 2 at the amino acid region 890-970.
Immunogen Sequence	



Immunofluorescence analysis of HeLa cells, using RBL2 Antibody. The picture on the right is blocked with the synthesized peptide.