

## Anti-USO1 antibody (890-970 C-Term) (STJ94850)

STJ94850

### GENERAL INFORMATION

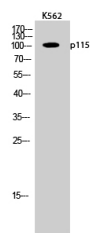
|                          |   |
|--------------------------|---|
| <b>Product Type</b>      | Primary antibodies  |
| <b>Short Description</b> | Rabbit polyclonal antibody anti-General Vesicular Transport Factor P115 (890-970 C-Term) is suitable for use in Western Blot and ELISA research applications. |
| <b>Applications</b>      | WB, ELISA   |
| <b>Host/Source</b>       | Rabbit  |
| <b>Reactivity</b>        | Human, Rat, Mouse   |

### PRODUCT PROPERTIES

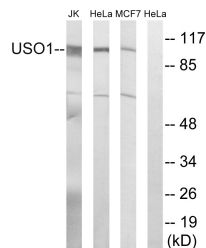
|                       |  |
|-----------------------|--|
| <b>Clonality</b>      | Polyclonal   |
| <b>Clone ID</b>       |  |
| <b>Concentration</b>  | 1 mg/mL  |
| <b>Conjugation</b>    | Unconjugated   |
| <b>Purification</b>   | The antibody was affinity-purified from rabbit anti-serum by affinity-chromatography.          |
| <b>Dilution Range</b> | WB 1:500-1:2000<br>ELISA 1:40000   |
| <b>Formulation</b>    | PBS, 50% Glycerol, 0.5% BSA and 0.02% Sodium Azide.  |
| <b>Isotype</b>        | IgG  |
| <b>Storage</b>        | Store at -20°C for up to 1 year from the date of receipt, and avoid repeat freeze-thaw cycles. |
| <b>Instruction</b>    |  |

### TARGET INFORMATION

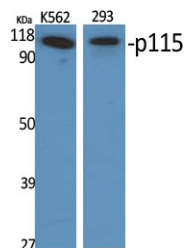
|                           |   |
|---------------------------|---|
| <b>Gene ID</b>            | 8615  |
| <b>Gene Symbol</b>        | USO1  |
| <b>Uniprot ID</b>         | USO1_HUMAN  |
| <b>Immunogen</b>          | The antiserum was produced against synthesized peptide derived from human USO1 at amino acid range 913-962  |
| <b>Immunogen Region</b>   | 890-970 C-Term  |
| <b>Specificity</b>        | USO1 polyclonal antibody (General Vesicular Transport Factor P115) binds to endogenous General Vesicular Transport Factor P115 at the amino acid region 890-970 C-Term. |
| <b>Immunogen Sequence</b> |   |



Western blot analysis of K562 cells using p115 Polyclonal Antibody diluted at 1: 2000



Western blot analysis of lysates from MCF-7, HeLa, and Jurkat cells, using USO1 Antibody. The lane on the right is blocked with the synthesized peptide.



Western blot analysis of various cells using p115 Polyclonal Antibody diluted at 1: 2000

This product is suitable for in-vitro studies under the RESEARCH USE ONLY [RUO] licence. This product must not be used as for diagnostic or other medical purposes.  
St John's Laboratory Ltd, Knowledge Dock Business Centre, University Way, London, E16 2RD | Tel: 0208 223 3081