

Anti-ACRBP antibody (150-230 Internal) (STJ94848)

STJ94848

GENERAL INFORMATION

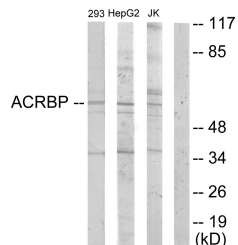
Product Type	Primary antibodies
Short Description	Rabbit polyclonal antibody anti-Acrosin-Binding Protein (150-230 Internal) is suitable for use in Western Blot, Immunohistochemistry, Immunofluorescence, Immunocytochemistry and ELISA research applications.
Applications	WB, IHC-P, IF, ICC, ELISA
Host/Source	Rabbit
Reactivity	Human, Rat, Mouse

PRODUCT PROPERTIES

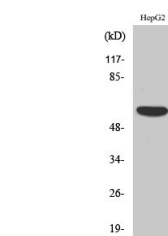
Clonality	Polyclonal
Clone ID	
Concentration	1 mg/mL
Conjugation	Unconjugated
Purification	The antibody was affinity-purified from rabbit anti-serum by affinity-chromatography.
Dilution Range	WB 1:500-1:2000 IHC 1:100-1:300 IF 1:200-1:1000 ELISA 1:10000
Formulation	PBS, 50% Glycerol, 0.5% BSA and 0.02% Sodium Azide.
Isotype	IgG
Storage Instruction	Store at -20°C for up to 1 year from the date of receipt, and avoid repeat freeze-thaw cycles.

TARGET INFORMATION

Gene ID	84519
Gene Symbol	ACRBP
Uniprot ID	ACRBP_HUMAN
Immunogen	The antiserum was produced against synthesized peptide derived from human ACRBP at amino acid range 181-230
Immunogen Region	150-230 Internal
Specificity	ACRBP polyclonal antibody (Acrosin-Binding Protein) binds to endogenous Acrosin-Binding Protein at the amino acid region 150-230 Internal.
Immunogen Sequence	



Western blot analysis of lysates from HepG2, Jurkat, and 293 cells, using ACRBP Antibody. The lane on the right is blocked with the synthesized peptide.



Western blot analysis of various cells using OY-TES-1 Polyclonal Antibody.