

Anti-OXSR1 antibody (250-330 Internal) (STJ94847)

STJ94847

GENERAL INFORMATION

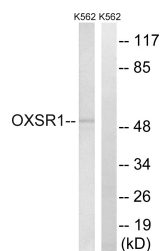
Product Type	Primary antibodies
Short Description	Rabbit polyclonal antibody anti-Serine/Threonine-Protein Kinase Osr1 (250-330 Internal) is suitable for use in Western Blot and ELISA research applications.
Applications	WB, ELISA
Host/Source	Rabbit
Reactivity	Human, Mouse

PRODUCT PROPERTIES

Clonality	Polyclonal
Clone ID	
Concentration	1 mg/mL
Conjugation	Unconjugated
Purification	The antibody was affinity-purified from rabbit anti-serum by affinity-chromatography.
Dilution Range	WB 1:500-1:2000 ELISA 1:40000
Formulation	PBS, 50% Glycerol, 0.5% BSA and 0.02% Sodium Azide.
Isotype	IgG
Storage Instruction	Store at -20°C for up to 1 year from the date of receipt, and avoid repeat freeze-thaw cycles.

TARGET INFORMATION

Gene ID	9943
Gene Symbol	OXSR1
Uniprot ID	OXSR1_HUMAN
Immunogen	The antiserum was produced against synthesized peptide derived from human OXSR1 at amino acid range 272-321
Immunogen Region	250-330 Internal
Specificity	OXSR1 polyclonal antibody (Serine/Threonine-Protein Kinase Osr1) binds to endogenous Serine/Threonine-Protein Kinase Osr1 at the amino acid region 250-330 Internal.
Immunogen Sequence	



Western blot analysis of lysates from K562 cells, using OXSR1 Antibody. The lane on the right is blocked with the synthesized peptide.