

## Anti-HCRTR1 antibody (200-280 Internal) (STJ94836)

STJ94836

### GENERAL INFORMATION

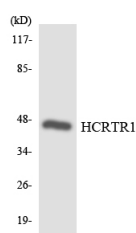
<b>Product Type</b>	Primary antibodies
<b>Short Description</b>	Rabbit polyclonal antibody anti-Orexin/Hypocretin Receptor Type 1 (200-280 Internal) is suitable for use in Western Blot and ELISA research applications.
<b>Applications</b>	WB, ELISA
<b>Host/Source</b>	Rabbit
<b>Reactivity</b>	Human, Mouse, Rat

### PRODUCT PROPERTIES

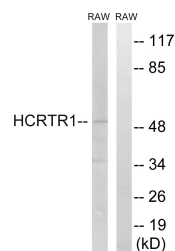
<b>Clonality</b>	Polyclonal
<b>Clone ID</b>	
<b>Concentration</b>	1 mg/mL
<b>Conjugation</b>	Unconjugated
<b>Purification</b>	The antibody was affinity-purified from rabbit anti-serum by affinity-chromatography.
<b>Dilution Range</b>	WB 1:500-1:2000 ELISA 1:5000
<b>Formulation</b>	PBS, 50% Glycerol, 0.5% BSA and 0.02% Sodium Azide.
<b>Isotype</b>	IgG
<b>Storage Instruction</b>	Store at -20°C for up to 1 year from the date of receipt, and avoid repeat freeze-thaw cycles.

### TARGET INFORMATION

<b>Gene ID</b>	3061
<b>Gene Symbol</b>	HCRTR1
<b>Uniprot ID</b>	OX1R_HUMAN
<b>Immunogen</b>	The antiserum was produced against synthesized peptide derived from human HCRTR1 at amino acid range 231-280
<b>Immunogen Region</b>	200-280 Internal
<b>Specificity</b>	HCRTR1 polyclonal antibody (Orexin/Hypocretin Receptor Type 1) binds to endogenous Orexin/Hypocretin Receptor Type 1 at the amino acid region 200-280 Internal.
<b>Immunogen Sequence</b>	



Western blot analysis of the lysates from HepG2 cells using HCRTR1 antibody.



Western blot analysis of lysates from RAW264.7 cells, using HCRTR1 Antibody. The lane on the right is blocked with the synthesized peptide.