

Anti-SLC22A18 antibody (330-410 C-Term) (STJ94835)

STJ94835

GENERAL INFORMATION

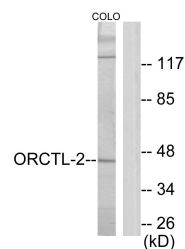
Product Type	Primary antibodies
Short Description	Rabbit polyclonal antibody anti-Solute Carrier Family 22 Member 18 (330-410 C-Term) is suitable for use in Western Blot, Immunofluorescence, Immunocytochemistry and ELISA research applications.
Applications	WB, IF, ICC, ELISA
Host/Source	Rabbit
Reactivity	Human, Rat, Mouse

PRODUCT PROPERTIES

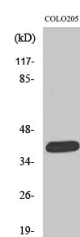
Clonality	Polyclonal
Clone ID	
Concentration	1 mg/mL
Conjugation	Unconjugated
Purification	The antibody was affinity-purified from rabbit anti-serum by affinity-chromatography.
Dilution Range	WB 1:500-1:2000 IF 1:200-1:1000 ELISA 1:10000
Formulation	PBS, 50% Glycerol, 0.5% BSA and 0.02% Sodium Azide.
Isotype	IgG
Storage Instruction	Store at -20°C for up to 1 year from the date of receipt, and avoid repeat freeze-thaw cycles.

TARGET INFORMATION

Gene ID	5002
Gene Symbol	SLC22A18
Uniprot ID	S22AL_HUMAN
Immunogen Region	The antiserum was produced against synthesized peptide derived from human ORCTL-2 at amino acid range 359-408
Immunogen Specificity	330-410 C-Term
Immunogen Sequence	SLC22A18 polyclonal antibody (Solute Carrier Family 22 Member 18) binds to endogenous Solute Carrier Family 22 Member 18 at the amino acid region 330-410 C-Term.



Western blot analysis of lysates from COLO205 cells, using ORCTL-2 Antibody. The lane on the right is blocked with the synthesized peptide.



Western blot analysis of various cells using ORCTL2 Polyclonal Antibody

This product is suitable for in-vitro studies under the RESEARCH USE ONLY [RUO] licence. This product must not be used as for diagnostic or other medical purposes.
St John's Laboratory Ltd, Knowledge Dock Business Centre, University Way, London, E16 2RD | Tel: 0208 223 3081