

Anti-ORC1 antibody (300-380 Internal) (STJ94834)

STJ94834

GENERAL INFORMATION

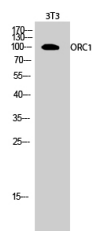
Product Type	Primary antibodies
Short Description	Rabbit polyclonal antibody anti-Origin Recognition Complex Subunit 1 (300-380 Internal) is suitable for use in Western Blot and ELISA research applications.
Applications	WB, ELISA
Host/Source	Rabbit
Reactivity	Human, Rat, Mouse

PRODUCT PROPERTIES

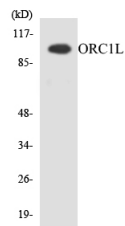
Clonality	Polyclonal
Clone ID	
Concentration	1 mg/mL
Conjugation	Unconjugated
Purification	The antibody was affinity-purified from rabbit anti-serum by affinity-chromatography.
Dilution Range	WB 1:500-1:2000 ELISA 1:5000
Formulation	PBS, 50% Glycerol, 0.5% BSA and 0.02% Sodium Azide.
Isotype	IgG
Storage Instruction	Store at -20°C for up to 1 year from the date of receipt, and avoid repeat freeze-thaw cycles.

TARGET INFORMATION

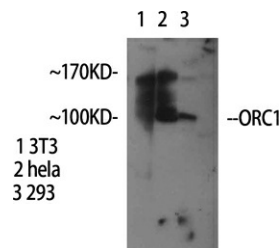
Gene ID	4998
Gene Symbol	ORC1
Uniprot ID	ORC1_HUMAN
Immunogen	The antiserum was produced against synthesized peptide derived from human ORC1L at amino acid range 331-380
Immunogen Region	300-380 Internal
Specificity	ORC1 polyclonal antibody (Origin Recognition Complex Subunit 1) binds to endogenous Origin Recognition Complex Subunit 1 at the amino acid region 300-380 Internal.
Immunogen Sequence	



Western blot analysis of 3T3 cells using ORC1 Polyclonal Antibody



Western blot analysis of the lysates from HepG2 cells using ORC1L antibody.



Western blot analysis of various cells using ORC1 Polyclonal Antibody

This product is suitable for in-vitro studies under the RESEARCH USE ONLY [RUO] licence. This product must not be used as for diagnostic or other medical purposes.
St John's Laboratory Ltd, Knowledge Dock Business Centre, University Way, London, E16 2RD | Tel: 0208 223 3081