

Anti-SPP1 antibody (230-310 C-Term) (STJ94832)

STJ94832

GENERAL INFORMATION

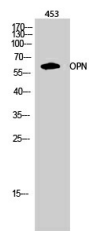
Product Type	Primary antibodies
Short Description	Rabbit polyclonal antibody anti-Osteopontin (230-310 C-Term) is suitable for use in Western Blot, Immunohistochemistry, Immunofluorescence and ELISA research applications.
Applications	WB, IHC-P, IF-P, ELISA
Host/Source	Rabbit
Reactivity	Human, Mouse, Rat

PRODUCT PROPERTIES

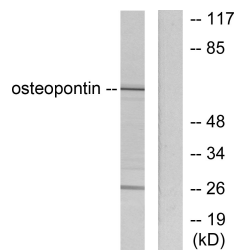
Clonality	Polyclonal
Clone ID	
Concentration	1 mg/mL
Conjugation	Unconjugated
Purification	The antibody was affinity-purified from rabbit anti-serum by affinity-chromatography.
Dilution Range	WB 1:500-1:2000 IHC 1:100-1:300 ELISA 1:20000
Formulation	PBS, 50% Glycerol, 0.5% BSA and 0.02% Sodium Azide.
Isotype	IgG
Storage Instruction	Store at -20°C for up to 1 year from the date of receipt, and avoid repeat freeze-thaw cycles.

TARGET INFORMATION

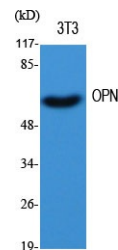
Gene ID	6696
Gene Symbol	SPP1
Uniprot ID	OSTP_HUMAN
Immunogen	The antiserum was produced against synthesized peptide derived from human Osteopontin at amino acid range 261-310
Immunogen Region	230-310 C-Term
Specificity	SPP1 polyclonal antibody (Osteopontin) binds to endogenous Osteopontin at the amino acid region 230-310 C-Term.
Immunogen Sequence	



Western blot analysis of 453 cells using OPN Polyclonal Antibody diluted at 1: 500



Western blot analysis of lysates from LOVO cells, using Osteopontin Antibody. The lane on the right is blocked with the synthesized peptide.



Western blot analysis of various cells using OPN Polyclonal Antibody diluted at 1: 500