

Anti-OMG antibody (260-340 Internal) (STJ94825)

STJ94825

GENERAL INFORMATION

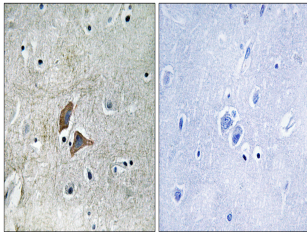
Product Type	Primary antibodies
Short Description	Rabbit polyclonal antibody anti-Oligodendrocyte-Myelin Glycoprotein (260-340 Internal) is suitable for use in Western Blot, Immunohistochemistry, Immunofluorescence and ELISA research applications.
Applications	WB, IHC-P, IF-P, ELISA
Host/Source	Rabbit
Reactivity	Human, Rat, Mouse

PRODUCT PROPERTIES

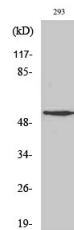
Clonality	Polyclonal
Clone ID	
Concentration	1 mg/mL
Conjugation	Unconjugated
Purification	The antibody was affinity-purified from rabbit anti-serum by affinity-chromatography.
Dilution Range	WB 1:500-1:2000 IHC 1:100-1:300 ELISA 1:10000
Formulation	PBS, 50% Glycerol, 0.5% BSA and 0.02% Sodium Azide.
Isotype	IgG
Storage Instruction	Store at -20°C for up to 1 year from the date of receipt, and avoid repeat freeze-thaw cycles.

TARGET INFORMATION

Gene ID	4974
Gene Symbol	OMG
Uniprot ID	OMGP_HUMAN
Immunogen Region	The antiserum was produced against synthesized peptide derived from human OMG at amino acid range 282-331
Specificity	260-340 Internal
Specificity	OMG polyclonal antibody (Oligodendrocyte-Myelin Glycoprotein) binds to endogenous Oligodendrocyte-Myelin Glycoprotein at the amino acid region 260-340 Internal.
Immunogen Sequence	



Immunohistochemistry analysis of paraffin-embedded human brain, using OMG Antibody. The picture on the right is blocked with the synthesized peptide.



Western blot analysis of various cells using OMG Polyclonal Antibody

This product is suitable for in-vitro studies under the RESEARCH USE ONLY [RUO] licence. This product must not be used as for diagnostic or other medical purposes.
St John's Laboratory Ltd, Knowledge Dock Business Centre, University Way, London, E16 2RD | Tel: 0208 223 3081