

Anti-OR8S1 antibody (60-140 Internal) (STJ94817)

STJ94817

GENERAL INFORMATION

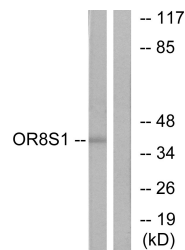
Product Type	Primary antibodies
Short Description	Rabbit polyclonal antibody anti-Olfactory Receptor 8s1 (60-140 Internal) is suitable for use in Western Blot and ELISA research applications.
Applications	WB, ELISA
Host/Source	Rabbit
Reactivity	Human, Rat, Mouse

PRODUCT PROPERTIES

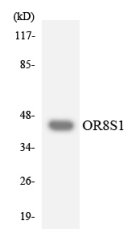
Clonality	Polyclonal
Clone ID	
Concentration	1 mg/mL
Conjugation	Unconjugated
Purification	The antibody was affinity-purified from rabbit anti-serum by affinity-chromatography.
Dilution Range	WB 1:500-1:2000 ELISA 1:20000
Formulation	PBS, 50% Glycerol, 0.5% BSA and 0.02% Sodium Azide.
Isotype	IgG
Storage Instruction	Store at -20°C for up to 1 year from the date of receipt, and avoid repeat freeze-thaw cycles.

TARGET INFORMATION

Gene ID	341568
Gene Symbol	OR8S1
Uniprot ID	OR8S1_HUMAN
Immunogen	The antiserum was produced against synthesized peptide derived from human OR8S1 at amino acid range 90-139
Immunogen Region	60-140 Internal
Specificity	OR8S1 polyclonal antibody (Olfactory Receptor 8s1) binds to endogenous Olfactory Receptor 8s1 at the amino acid region 60-140 Internal.
Immunogen Sequence	



Western blot analysis of lysates from HT-29 cells, using OR8S1 Antibody. The lane on the right is blocked with the synthesized peptide.



Western blot analysis of the lysates from HeLa cells using OR8S1 antibody.



Western blot analysis of various cells using Olfactory receptor 8S1 Polyclonal Antibody diluted at 1: 1000

This product is suitable for in-vitro studies under the RESEARCH USE ONLY [RUO] licence. This product must not be used as for diagnostic or other medical purposes.
St John's Laboratory Ltd, Knowledge Dock Business Centre, University Way, London, E16 2RD | Tel: 0208 223 3081