

Anti-OR8J3 antibody (200-280 C-Term) (STJ94814)

STJ94814

GENERAL INFORMATION

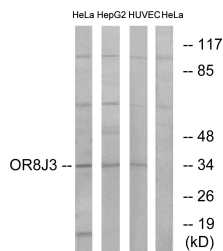
Product Type	Primary antibodies
Short Description	Rabbit polyclonal antibody anti-Olfactory Receptor 8j3 (200-280 C-Term) is suitable for use in Western Blot, Immunofluorescence, Immunocytochemistry and ELISA research applications.
Applications	WB, IF, ICC, ELISA
Host/Source	Rabbit
Reactivity	Human, Rat, Mouse

PRODUCT PROPERTIES

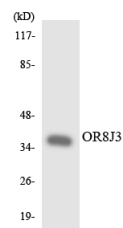
Clonality	Polyclonal
Clone ID	
Concentration	1 mg/mL
Conjugation	Unconjugated
Purification	The antibody was affinity-purified from rabbit anti-serum by affinity-chromatography.
Dilution Range	WB 1:500-1:2000 IF 1:200-1:1000 ELISA 1:10000
Formulation	PBS, 50% Glycerol, 0.5% BSA and 0.02% Sodium Azide.
Isotype	IgG
Storage Instruction	Store at -20°C for up to 1 year from the date of receipt, and avoid repeat freeze-thaw cycles.

TARGET INFORMATION

Gene ID	81168
Gene Symbol	OR8J3
Uniprot ID	OR8J3_HUMAN
Immunogen	The antiserum was produced against synthesized peptide derived from human OR8J3 at amino acid range 232-281
Immunogen Region	200-280 C-Term
Specificity	OR8J3 polyclonal antibody (Olfactory Receptor 8j3) binds to endogenous Olfactory Receptor 8j3 at the amino acid region 200-280 C-Term.
Immunogen Sequence	



Western blot analysis of lysates from HeLa, HepG2, and HUVEC cells, using OR8J3 Antibody. The lane on the right is blocked with the synthesized peptide.



Western blot analysis of the lysates from K562 cells using OR8J3 antibody.



Western blot analysis of various cells using Olfactory receptor 8J3 Polyclonal Antibody

This product is suitable for in-vitro studies under the RESEARCH USE ONLY [RUO] licence. This product must not be used as for diagnostic or other medical purposes.
St John's Laboratory Ltd, Knowledge Dock Business Centre, University Way, London, E16 2RD | Tel: 0208 223 3081