

Anti-OR8H2 antibody (60-140 Internal) (STJ94810)

STJ94810

GENERAL INFORMATION

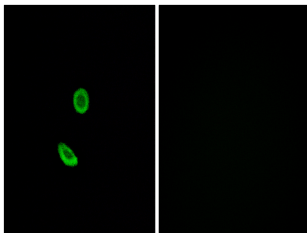
Product Type	Primary antibodies
Short Description	Rabbit polyclonal antibody anti-Olfactory Receptor 8h2 (60-140 Internal) is suitable for use in Immunofluorescence, Immunocytochemistry and ELISA research applications.
Applications	IF, ICC, ELISA
Host/Source	Rabbit
Reactivity	Human, Rat, Mouse

PRODUCT PROPERTIES

Clonality	Polyclonal
Clone ID	
Concentration	1 mg/mL
Conjugation	Unconjugated
Purification	The antibody was affinity-purified from rabbit anti-serum by affinity-chromatography.
Dilution Range	IF 1:200-1:1000 ELISA 1:20000
Formulation	PBS, 50% Glycerol, 0.5% BSA and 0.02% Sodium Azide.
Isotype	IgG
Storage Instruction	Store at -20°C for up to 1 year from the date of receipt, and avoid repeat freeze-thaw cycles.

TARGET INFORMATION

Gene ID	390151
Gene Symbol	OR8H2
Uniprot ID	OR8H2_HUMAN
Immunogen	The antiserum was produced against synthesized peptide derived from human OR8H2 at amino acid range 87-136
Immunogen Region	60-140 Internal
Specificity	OR8H2 polyclonal antibody (Olfactory Receptor 8h2) binds to endogenous Olfactory Receptor 8h2 at the amino acid region 60-140 Internal.
Immunogen Sequence	



Immunofluorescence analysis of A549 cells, using OR8H2 Antibody. The picture on the right is blocked with the synthesized peptide.