

## Anti-OR8B4 antibody (220-300 C-Term) (STJ94805)

STJ94805

### GENERAL INFORMATION

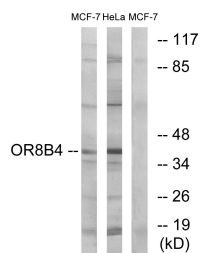
<b>Product Type</b>	Primary antibodies
<b>Short Description</b>	Rabbit polyclonal antibody anti-Olfactory Receptor 8b4 (220-300 C-Term) is suitable for use in Western Blot, Immunofluorescence, Immunocytochemistry and ELISA research applications.
<b>Applications</b>	WB, IF, ICC, ELISA
<b>Host/Source</b>	Rabbit
<b>Reactivity</b>	Human, Rat, Mouse

### PRODUCT PROPERTIES

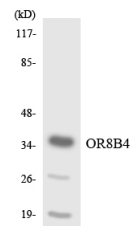
<b>Clonality</b>	Polyclonal
<b>Clone ID</b>	
<b>Concentration</b>	1 mg/mL
<b>Conjugation</b>	Unconjugated
<b>Purification</b>	The antibody was affinity-purified from rabbit anti-serum by affinity-chromatography.
<b>Dilution Range</b>	WB 1:500-1:2000 IF 1:200-1:1000 ELISA 1:5000
<b>Formulation</b>	PBS, 50% Glycerol, 0.5% BSA and 0.02% Sodium Azide.
<b>Isotype</b>	IgG
<b>Storage Instruction</b>	Store at -20°C for up to 1 year from the date of receipt, and avoid repeat freeze-thaw cycles.

### TARGET INFORMATION

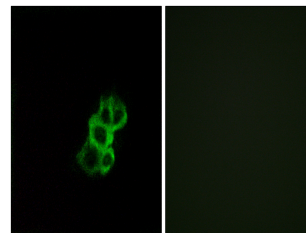
<b>Gene ID</b>	283162
<b>Gene Symbol</b>	OR8B4
<b>Uniprot ID</b>	OR8B4_HUMAN
<b>Immunogen</b>	The antiserum was produced against synthesized peptide derived from human OR8B4 at amino acid range 260-309
<b>Immunogen Region</b>	220-300 C-Term
<b>Specificity</b>	OR8B4 polyclonal antibody (Olfactory Receptor 8b4) binds to endogenous Olfactory Receptor 8b4 at the amino acid region 220-300 C-Term.
<b>Immunogen Sequence</b>	



Western blot analysis of lysates from MCF-7 and HeLa cells, using OR8B4 Antibody. The lane on the right is blocked with the synthesized peptide.



Western blot analysis of the lysates from Jurkat cells using OR8B4 antibody.



Immunofluorescence analysis of MCF7 cells, using OR8B4 Antibody. The picture on the right is blocked with the synthesized peptide.

This product is suitable for in-vitro studies under the RESEARCH USE ONLY [RUO] licence. This product must not be used as for diagnostic or other medical purposes.  
St John's Laboratory Ltd, Knowledge Dock Business Centre, University Way, London, E16 2RD | Tel: 0208 223 3081