

Anti-Olfactory receptor 7E5P antibody (30-110 Internal) (STJ94802)

STJ94802

GENERAL INFORMATION

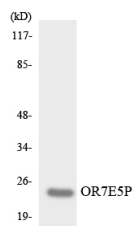
Product Type	Primary antibodies
Short Description	Rabbit polyclonal antibody anti-Olfactory receptor 7E5P (30-110 Internal) is suitable for use in Western Blot, Immunofluorescence, Immunocytochemistry and ELISA research applications.
Applications	WB, IF, ICC, ELISA
Host/Source	Rabbit
Reactivity	Human, Rat, Mouse

PRODUCT PROPERTIES

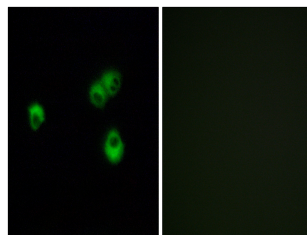
Clonality	Polyclonal
Clone ID	
Concentration	1 mg/mL
Conjugation	Unconjugated
Purification	The antibody was affinity-purified from rabbit anti-serum by affinity-chromatography.
Dilution Range	WB 1:500-1:2000 IF 1:200-1:1000 ELISA 1:10000
Formulation	PBS, 50% Glycerol, 0.5% BSA and 0.02% Sodium Azide.
Isotype	IgG
Storage Instruction	Store at -20°C for up to 1 year from the date of receipt, and avoid repeat freeze-thaw cycles.

TARGET INFORMATION

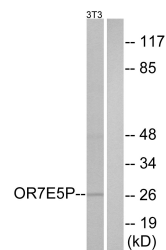
Gene ID	
Gene Symbol	
Uniprot ID	
Immunogen	The antiserum was produced against synthesized peptide derived from human OR7E5P at amino acid range 35-84
Immunogen Region	30-110 Internal
Specificity	Olfactory receptor 7E5P polyclonal antibody (Olfactory receptor 7E5P) binds to endogenous Olfactory receptor 7E5P at the amino acid region 30-110 Internal.
Immunogen Sequence	



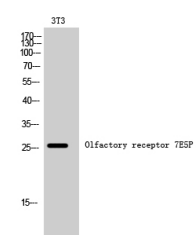
Western blot analysis of the lysates from COLO205 cells using OR7E5P antibody.



Immunofluorescence analysis of MCF-7 cells, using OR7E5P Antibody. The picture on the right is blocked with the synthesized peptide.



Western blot analysis of lysates from NIH/3T3 cells, using OR7E5P Antibody. The lane on the right is blocked with the synthesized peptide.



Western blot analysis of 3T3 cells using Olfactory receptor 7E5P Polyclonal Antibody

This product is suitable for in-vitro studies under the RESEARCH USE ONLY [RUO] licence. This product must not be used as for diagnostic or other medical purposes.
St John's Laboratory Ltd, Knowledge Dock Business Centre, University Way, London, E16 2RD | Tel: 0208 223 3081