

## Anti-OR7C1 antibody (170-250 Internal) (STJ94800)

STJ94800

### GENERAL INFORMATION

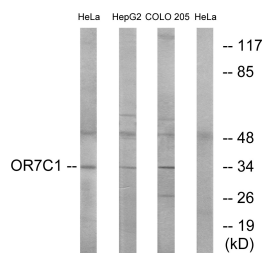
<b>Product Type</b>	Primary antibodies
<b>Short Description</b>	Rabbit polyclonal antibody anti-Olfactory Receptor 7c1 (170-250 Internal) is suitable for use in Western Blot, Immunofluorescence, Immunocytochemistry and ELISA research applications.
<b>Applications</b>	WB, IF, ICC, ELISA
<b>Host/Source</b>	Rabbit
<b>Reactivity</b>	Human, Rat, Mouse

### PRODUCT PROPERTIES

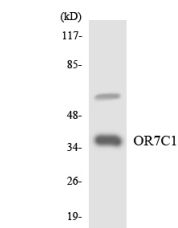
<b>Clonality</b>	Polyclonal
<b>Clone ID</b>	
<b>Concentration</b>	1 mg/mL
<b>Conjugation</b>	Unconjugated
<b>Purification</b>	The antibody was affinity-purified from rabbit anti-serum by affinity-chromatography.
<b>Dilution Range</b>	WB 1:500-1:2000 IF 1:200-1:1000 ELISA 1:20000
<b>Formulation</b>	PBS, 50% Glycerol, 0.5% BSA and 0.02% Sodium Azide.
<b>Isotype</b>	IgG
<b>Storage Instruction</b>	Store at -20°C for up to 1 year from the date of receipt, and avoid repeat freeze-thaw cycles.

### TARGET INFORMATION

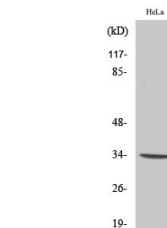
<b>Gene ID</b>	26664
<b>Gene Symbol</b>	OR7C1
<b>Uniprot ID</b>	OR7C1_HUMAN
<b>Immunogen</b>	The antiserum was produced against synthesized peptide derived from human OR7C1 at amino acid range 199-248
<b>Immunogen Region</b>	170-250 Internal
<b>Specificity</b>	OR7C1 polyclonal antibody (Olfactory Receptor 7c1) binds to endogenous Olfactory Receptor 7c1 at the amino acid region 170-250 Internal.
<b>Immunogen Sequence</b>	



Western blot analysis of lysates from HeLa, HepG2, and COLO cells, using OR7C1 Antibody. The lane on the right is blocked with the synthesized peptide.



Western blot analysis of the lysates from HT-29 cells using OR7C1 antibody.



Western blot analysis of various cells using Olfactory receptor 7C1 Polyclonal Antibody diluted at 1: 500.