

Anti-OR7A10 antibody (220-300 C-Term) (STJ94799)

STJ94799

GENERAL INFORMATION

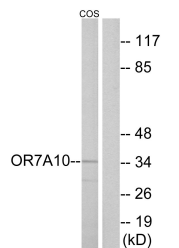
Product Type	Primary antibodies
Short Description	Rabbit polyclonal antibody anti-Olfactory Receptor 7a10 (220-300 C-Term) is suitable for use in Western Blot and ELISA research applications.
Applications	WB, ELISA
Host/Source	Rabbit
Reactivity	Human, Monkey

PRODUCT PROPERTIES

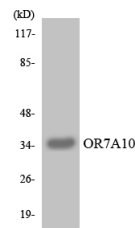
Clonality	Polyclonal
Clone ID	
Concentration	1 mg/mL
Conjugation	Unconjugated
Purification	The antibody was affinity-purified from rabbit anti-serum by affinity-chromatography.
Dilution Range	WB 1:500-1:2000 ELISA 1:10000
Formulation	PBS, 50% Glycerol, 0.5% BSA and 0.02% Sodium Azide.
Isotype	IgG
Storage Instruction	Store at -20°C for up to 1 year from the date of receipt, and avoid repeat freeze-thaw cycles.

TARGET INFORMATION

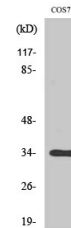
Gene ID	390892
Gene Symbol	OR7A10
Uniprot ID	OR7AA_HUMAN
Immunogen	The antiserum was produced against synthesized peptide derived from human OR7A10 at amino acid range 260-309
Immunogen Region	220-300 C-Term
Specificity	OR7A10 polyclonal antibody (Olfactory Receptor 7a10) binds to endogenous Olfactory Receptor 7a10 at the amino acid region 220-300 C-Term.
Immunogen Sequence	



Western blot analysis of lysates from COS7 cells, using OR7A10 Antibody. The lane on the right is blocked with the synthesized peptide.



Western blot analysis of the lysates from HepG2 cells using OR7A10 antibody.



Western blot analysis of various cells using Olfactory receptor 7A10 Polyclonal Antibody

This product is suitable for in-vitro studies under the RESEARCH USE ONLY [RUO] licence. This product must not be used as for diagnostic or other medical purposes.
St John's Laboratory Ltd, Knowledge Dock Business Centre, University Way, London, E16 2RD | Tel: 0208 223 3081