

Anti-OR6P1 antibody (130-210 Internal) (STJ94795)

STJ94795

GENERAL INFORMATION

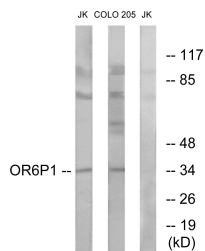
Product Type	Primary antibodies
Short Description	Rabbit polyclonal antibody anti-Olfactory Receptor 6p1 (130-210 Internal) is suitable for use in Western Blot, Immunofluorescence, Immunocytochemistry and ELISA research applications.
Applications	WB, IF, ICC, ELISA
Host/Source	Rabbit
Reactivity	Human, Rat, Mouse

PRODUCT PROPERTIES

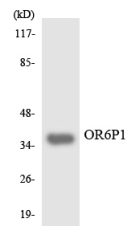
Clonality	Polyclonal
Clone ID	
Concentration	1 mg/mL
Conjugation	Unconjugated
Purification	The antibody was affinity-purified from rabbit anti-serum by affinity-chromatography.
Dilution Range	WB 1:500-1:2000 IF 1:200-1:1000 ELISA 1:20000
Formulation	PBS, 50% Glycerol, 0.5% BSA and 0.02% Sodium Azide.
Isotype	IgG
Storage Instruction	Store at -20°C for up to 1 year from the date of receipt, and avoid repeat freeze-thaw cycles.

TARGET INFORMATION

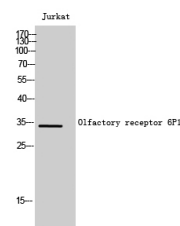
Gene ID	128366
Gene Symbol	OR6P1
Uniprot ID	OR6P1_HUMAN
Immunogen	The antiserum was produced against synthesized peptide derived from human OR6P1 at amino acid range 160-209
Immunogen Region	130-210 Internal
Specificity	OR6P1 polyclonal antibody (Olfactory Receptor 6p1) binds to endogenous Olfactory Receptor 6p1 at the amino acid region 130-210 Internal.
Immunogen Sequence	



Western blot analysis of lysates from Jurkat and COLO cells, using OR6P1 Antibody. The lane on the right is blocked with the synthesized peptide.



Western blot analysis of the lysates from HUVEC cells using OR6P1 antibody.



Western blot analysis of Jurkat cells using Olfactory receptor 6P1 Polyclonal Antibody

This product is suitable for in-vitro studies under the RESEARCH USE ONLY [RUO] licence. This product must not be used as for diagnostic or other medical purposes.
St John's Laboratory Ltd, Knowledge Dock Business Centre, University Way, London, E16 2RD | Tel: 0208 223 3081