

Anti-OR6B2 antibody (230-310 C-Term) (STJ94788)

STJ94788

GENERAL INFORMATION

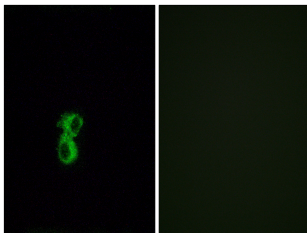
Product Type	Primary antibodies
Short Description	Rabbit polyclonal antibody anti-Olfactory Receptor 6b2 (230-310 C-Term) is suitable for use in Immunofluorescence, Immunocytochemistry and ELISA research applications.
Applications	IF, ICC, ELISA
Host/Source	Rabbit
Reactivity	Human, Rat, Mouse

PRODUCT PROPERTIES

Clonality	Polyclonal
Clone ID	
Concentration	1 mg/mL
Conjugation	Unconjugated
Purification	The antibody was affinity-purified from rabbit anti-serum by affinity-chromatography.
Dilution Range	IF 1:200-1:1000 ELISA 1:10000
Formulation	PBS, 50% Glycerol, 0.5% BSA and 0.02% Sodium Azide.
Isotype	IgG
Storage	Store at -20°C for up to 1 year from the date of receipt, and avoid repeat freeze-thaw cycles.
Instruction	

TARGET INFORMATION

Gene ID	389090
Gene Symbol	OR6B2
Uniprot ID	OR6B2_HUMAN
Immunogen	The antiserum was produced against synthesized peptide derived from human OR6B2 at amino acid range 261-310
Immunogen Region	230-310 C-Term
Specificity	OR6B2 polyclonal antibody (Olfactory Receptor 6b2) binds to endogenous Olfactory Receptor 6b2 at the amino acid region 230-310 C-Term.
Immunogen Sequence	



Immunofluorescence analysis of MCF7 cells, using OR6B2 Antibody. The picture on the right is blocked with the synthesized peptide.