

Anti-Olfactory receptor 6A2 antibody (30-110 Internal) (STJ94787)

STJ94787

GENERAL INFORMATION

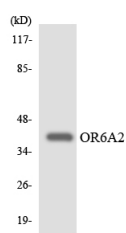
Product Type	Primary antibodies
Short Description	Rabbit polyclonal antibody anti-Olfactory receptor 6A2 and Olfactory receptor 6A2 (30-110 Internal) is suitable for use in Western Blot and ELISA research applications.
Applications	WB, ELISA
Host/Source	Rabbit
Reactivity	Human, Rat, Mouse

PRODUCT PROPERTIES

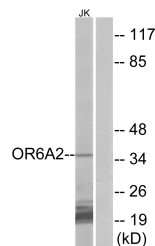
Clonality	Polyclonal
Clone ID	
Concentration	1 mg/mL
Conjugation	Unconjugated
Purification	The antibody was affinity-purified from rabbit anti-serum by affinity-chromatography.
Dilution	WB 1:500-1:2000
Range	ELISA 1:20000
Formulation	PBS, 50% Glycerol, 0.5% BSA and 0.02% Sodium Azide.
Isotype	IgG
Storage	Store at -20°C for up to 1 year from the date of receipt, and avoid repeat freeze-thaw cycles.
Instruction	

TARGET INFORMATION

Gene ID	8590
Gene Symbol	OR6A2
Uniprot ID	OR6A2_HUMAN
Immunogen	The antiserum was produced against synthesized peptide derived from human OR6A2 at amino acid range 58-107
Immunogen Region	30-110 Internal
Specificity	Olfactory receptor 6A2 polyclonal antibody (Olfactory receptor 6A2 and Olfactory receptor 6A2) binds to endogenous Olfactory receptor 6A2 and Olfactory receptor 6A2 at the amino acid region 30-110 Internal.
Immunogen Sequence	



Western blot analysis of the lysates from HeLa cells using OR6A2 antibody.



Western blot analysis of lysates from Jurkat cells, using OR6A2 Antibody. The lane on the right is blocked with the synthesized peptide.