

Anti-OR14J1 antibody (240-320 C-Term) (STJ94784)

STJ94784

GENERAL INFORMATION

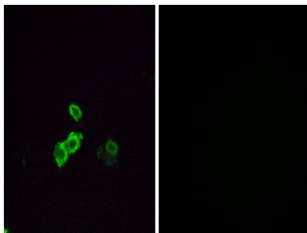
Product Type	Primary antibodies
Short Description	Rabbit polyclonal antibody anti-Olfactory Receptor 14j1 (240-320 C-Term) is suitable for use in Immunofluorescence, Immunocytochemistry and ELISA research applications.
Applications	IF, ICC, ELISA
Host/Source	Rabbit
Reactivity	Human, Rat, Mouse

PRODUCT PROPERTIES

Clonality	Polyclonal
Clone ID	
Concentration	1 mg/mL
Conjugation	Unconjugated
Purification	The antibody was affinity-purified from rabbit anti-serum by affinity-chromatography.
Dilution Range	IF 1:200-1:1000 ELISA 1:5000
Formulation	PBS, 50% Glycerol, 0.5% BSA and 0.02% Sodium Azide.
Isotype	IgG
Storage	Store at -20°C for up to 1 year from the date of receipt, and avoid repeat freeze-thaw cycles.
Instruction	

TARGET INFORMATION

Gene ID	442191
Gene Symbol	OR14J1
Uniprot ID	O14J1_HUMAN
Immunogen	The antiserum was produced against synthesized peptide derived from human OR5U1 at amino acid range 272-321
Immunogen Region	240-320 C-Term
Specificity	OR14J1 polyclonal antibody (Olfactory Receptor 14j1) binds to endogenous Olfactory Receptor 14j1 at the amino acid region 240-320 C-Term.
Immunogen Sequence	



Immunofluorescence analysis of MCF7 cells, using OR5U1 Antibody. The picture on the right is blocked with the synthesized peptide.