

Anti-Olfactory receptor 5L1/2 antibody (30-110 Internal) (STJ94775)

STJ94775

GENERAL INFORMATION

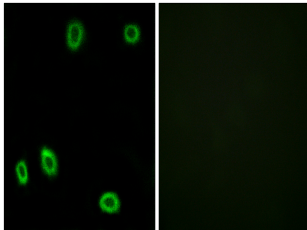
Product Type	Primary antibodies
Short Description	Rabbit polyclonal antibody anti-Olfactory receptor 5L1 and Olfactory receptor 5L2 (30-110 Internal) is suitable for use in Immunofluorescence, Immunocytochemistry and ELISA research applications.
Applications	IF, ICC, ELISA
Host/Source	Rabbit
Reactivity	Human, Rat, Mouse

PRODUCT PROPERTIES

Clonality	Polyclonal
Clone ID	
Concentration	1 mg/mL
Conjugation	Unconjugated
Purification	The antibody was affinity-purified from rabbit anti-serum by affinity-chromatography.
Dilution	IF 1:200-1:1000
Range	ELISA 1:5000
Formulation	PBS, 50% Glycerol, 0.5% BSA and 0.02% Sodium Azide.
Isotype	IgG
Storage	Store at -20°C for up to 1 year from the date of receipt, and avoid repeat freeze-thaw cycles.
Instruction	

TARGET INFORMATION

Gene ID	219437 26338
Gene Symbol	OR5L1 OR5L2
Uniprot ID	OR5L1_HUMAN OR5L2_HUMAN
Immunogen	The antiserum was produced against synthesized peptide derived from human OR5L1/2 at amino acid range 55-104
Immunogen Region	30-110 Internal
Specificity	Olfactory receptor 5L1/2 polyclonal antibody (Olfactory receptor 5L1 and Olfactory receptor 5L2) binds to endogenous Olfactory receptor 5L1 and Olfactory receptor 5L2 at the amino acid region 30-110 Internal.
Immunogen Sequence	



Immunofluorescence analysis of HUVEC cells, using OR5L1/2 Antibody. The picture on the right is blocked with the synthesized peptide.

This product is suitable for in-vitro studies under the RESEARCH USE ONLY [RUO] licence. This product must not be used as for diagnostic or other medical purposes.
St John's Laboratory Ltd, Knowledge Dock Business Centre, University Way, London, E16 2RD | Tel: 0208 223 3081