

Anti-OR5H1 antibody (220-300 C-Term) (STJ94769)

STJ94769

GENERAL INFORMATION

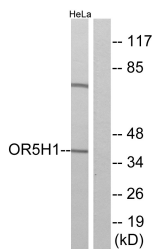
Product Type	Primary antibodies
Short Description	Rabbit polyclonal antibody anti-Olfactory Receptor 5h1 (220-300 C-Term) is suitable for use in Western Blot, Immunofluorescence, Immunocytochemistry and ELISA research applications.
Applications	WB, IF, ICC, ELISA
Host/Source	Rabbit
Reactivity	Human, Rat, Mouse

PRODUCT PROPERTIES

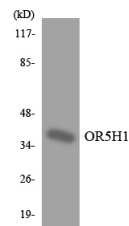
Clonality	Polyclonal
Clone ID	
Concentration	1 mg/mL
Conjugation	Unconjugated
Purification	The antibody was affinity-purified from rabbit anti-serum by affinity-chromatography.
Dilution Range	WB 1:500-1:2000 IF 1:200-1:1000 ELISA 1:20000
Formulation	PBS, 50% Glycerol, 0.5% BSA and 0.02% Sodium Azide.
Isotype	IgG
Storage Instruction	Store at -20°C for up to 1 year from the date of receipt, and avoid repeat freeze-thaw cycles.

TARGET INFORMATION

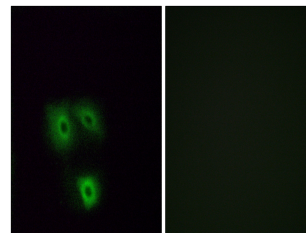
Gene ID	26341
Gene Symbol	OR5H1
Uniprot ID	OR5H1_HUMAN
Immunogen	The antiserum was produced against synthesized peptide derived from human OR5H1 at amino acid range 262-311
Immunogen Region	220-300 C-Term
Specificity	OR5H1 polyclonal antibody (Olfactory Receptor 5h1) binds to endogenous Olfactory Receptor 5h1 at the amino acid region 220-300 C-Term.
Immunogen Sequence	



Western blot analysis of lysates from HeLa cells, using OR5H1 Antibody. The lane on the right is blocked with the synthesized peptide.



Western blot analysis of the lysates from HepG2 cells using OR5H1 antibody.



Immunofluorescence analysis of A549 cells, using OR5H1 Antibody. The picture on the right is blocked with the synthesized peptide.

This product is suitable for in-vitro studies under the RESEARCH USE ONLY [RUO] licence. This product must not be used as for diagnostic or other medical purposes.
St John's Laboratory Ltd, Knowledge Dock Business Centre, University Way, London, E16 2RD | Tel: 0208 223 3081