

Anti-Olfactory receptor 5D3 antibody (100-180 Internal) (STJ94767)

STJ94767

GENERAL INFORMATION

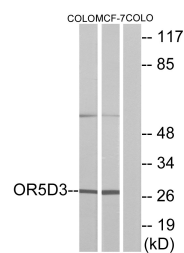
Product Type	Primary antibodies
Short Description	Rabbit polyclonal antibody anti-Olfactory receptor and Olfactory receptor and OBSOLETE (100-180 Internal) is suitable for use in Western Blot, Immunofluorescence, Immunocytochemistry and ELISA research applications.
Applications	WB, IF, ICC, ELISA
Host/Source	Rabbit
Reactivity	Human, Rat, Mouse

PRODUCT PROPERTIES

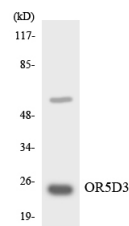
Clonality	Polyclonal
Clone ID	
Concentration	1 mg/mL
Conjugation	Unconjugated
Purification	The antibody was affinity-purified from rabbit anti-serum by affinity-chromatography.
Dilution Range	WB 1:500-1:2000 IF 1:200-1:1000 ELISA 1:10000
Formulation	PBS, 50% Glycerol, 0.5% BSA and 0.02% Sodium Azide.
Isotype	IgG
Storage Instruction	Store at -20°C for up to 1 year from the date of receipt, and avoid repeat freeze-thaw cycles.

TARGET INFORMATION

Gene ID	
Gene Symbol	
Uniprot ID	
Immunogen	The antiserum was produced against synthesized peptide derived from human OR5D3 at amino acid range 148-197
Immunogen Region	100-180 Internal
Specificity	Olfactory receptor 5D3 polyclonal antibody (Olfactory receptor and Olfactory receptor and OBSOLETE) binds to endogenous Olfactory receptor and Olfactory receptor and OBSOLETE at the amino acid region 100-180 Internal.
Immunogen Sequence	



Western blot analysis of lysates from COLO205 cells and MCF-7 cells, using OR5D3 Antibody. The lane on the right is blocked with the synthesized peptide.



Western blot analysis of the lysates from HT-29 cells using OR5D3 antibody.



Western blot analysis of various cells using Olfactory receptor 5D3 Polyclonal Antibody diluted at 1: 500

This product is suitable for in-vitro studies under the RESEARCH USE ONLY [RUO] licence. This product must not be used as for diagnostic or other medical purposes.
St John's Laboratory Ltd, Knowledge Dock Business Centre, University Way, London, E16 2RD | Tel: 0208 223 3081