

Anti-OR56B1 antibody (130-210 Internal) (STJ94754)

STJ94754

GENERAL INFORMATION

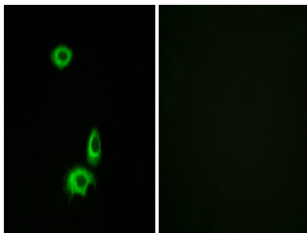
Product Type	Primary antibodies
Short Description	Rabbit polyclonal antibody anti-Olfactory Receptor 56b1 (130-210 Internal) is suitable for use in Immunofluorescence, Immunocytochemistry and ELISA research applications.
Applications	IF, ICC, ELISA
Host/Source	Rabbit
Reactivity	Human, Rat, Mouse

PRODUCT PROPERTIES

Clonality	Polyclonal
Clone ID	
Concentration	1 mg/mL
Conjugation	Unconjugated
Purification	The antibody was affinity-purified from rabbit anti-serum by affinity-chromatography.
Dilution Range	IF 1:200-1:1000 ELISA 1:10000
Formulation	PBS, 50% Glycerol, 0.5% BSA and 0.02% Sodium Azide.
Isotype	IgG
Storage	Store at -20°C for up to 1 year from the date of receipt, and avoid repeat freeze-thaw cycles.
Instruction	

TARGET INFORMATION

Gene ID	387748
Gene Symbol	OR56B1
Uniprot ID	O56B1_HUMAN
Immunogen	The antiserum was produced against synthesized peptide derived from human OR56B1 at amino acid range 161-210
Immunogen Region	130-210 Internal
Specificity	OR56B1 polyclonal antibody (Olfactory Receptor 56b1) binds to endogenous Olfactory Receptor 56b1 at the amino acid region 130-210 Internal.
Immunogen Sequence	



Immunofluorescence analysis of HUVEC cells, using OR56B1 Antibody. The picture on the right is blocked with the synthesized peptide.

This product is suitable for in-vitro studies under the RESEARCH USE ONLY [RUO] licence. This product must not be used as for diagnostic or other medical purposes.
St John's Laboratory Ltd, Knowledge Dock Business Centre, University Way, London, E16 2RD | Tel: 0208 223 3081