

Anti-OR52E4 antibody (170-250 Internal) (STJ94745)

STJ94745

GENERAL INFORMATION

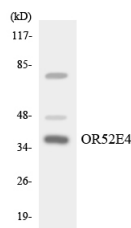
Product Type	Primary antibodies
Short Description	Rabbit polyclonal antibody anti-Olfactory Receptor 52e4 (170-250 Internal) is suitable for use in Western Blot, Immunofluorescence, Immunocytochemistry and ELISA research applications.
Applications	WB, IF, ICC, ELISA
Host/Source	Rabbit
Reactivity	Human, Rat, Mouse

PRODUCT PROPERTIES

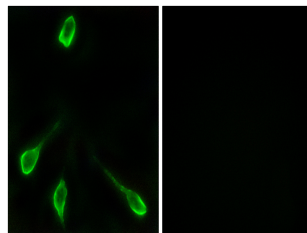
Clonality	Polyclonal
Clone ID	
Concentration	1 mg/mL
Conjugation	Unconjugated
Purification	The antibody was affinity-purified from rabbit anti-serum by affinity-chromatography.
Dilution Range	WB 1:500-1:2000 IF 1:200-1:1000 ELISA 1:20000
Formulation	PBS, 50% Glycerol, 0.5% BSA and 0.02% Sodium Azide.
Isotype	IgG
Storage Instruction	Store at -20°C for up to 1 year from the date of receipt, and avoid repeat freeze-thaw cycles.

TARGET INFORMATION

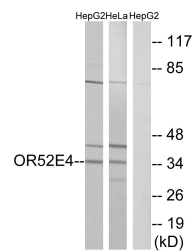
Gene ID	390081
Gene Symbol	OR52E4
Uniprot ID	O52E4_HUMAN
Immunogen	The antiserum was produced against synthesized peptide derived from human OR52E4 at amino acid range 200-249
Immunogen Region	170-250 Internal
Specificity	OR52E4 polyclonal antibody (Olfactory Receptor 52e4) binds to endogenous Olfactory Receptor 52e4 at the amino acid region 170-250 Internal.
Immunogen Sequence	



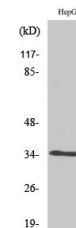
Western blot analysis of the lysates from HT-29 cells using OR52E4 antibody.



Immunofluorescence analysis of LOVO cells, using OR52E4 Antibody. The picture on the right is blocked with the synthesized peptide.



Western blot analysis of lysates from HepG2 and HeLa cells, using OR52E4 Antibody. The lane on the right is blocked with the synthesized peptide.



Western blot analysis of various cells using Olfactory receptor 52E4 Polyclonal Antibody diluted at 1 : 2000