

Anti-OR52B2 antibody (180-260 Internal) (STJ94741)

STJ94741

GENERAL INFORMATION

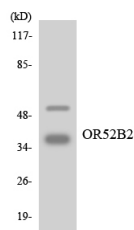
Product Type	Primary antibodies
Short Description	Rabbit polyclonal antibody anti-Olfactory Receptor 52b2 (180-260 Internal) is suitable for use in Western Blot, Immunofluorescence, Immunocytochemistry and ELISA research applications.
Applications	WB, IF, ICC, ELISA
Host/Source	Rabbit
Reactivity	Human, Rat, Mouse

PRODUCT PROPERTIES

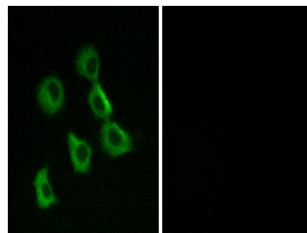
Clonality	Polyclonal
Clone ID	
Concentration	1 mg/mL
Conjugation	Unconjugated
Purification	The antibody was affinity-purified from rabbit anti-serum by affinity-chromatography.
Dilution Range	WB 1:500-1:2000 IF 1:200-1:1000 ELISA 1:5000
Formulation	PBS, 50% Glycerol, 0.5% BSA and 0.02% Sodium Azide.
Isotype	IgG
Storage Instruction	Store at -20°C for up to 1 year from the date of receipt, and avoid repeat freeze-thaw cycles.

TARGET INFORMATION

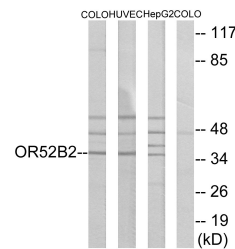
Gene ID	255725
Gene Symbol	OR52B2
Uniprot ID	O52B2_HUMAN
Immunogen	The antiserum was produced against synthesized peptide derived from human OR52B2 at amino acid range 201-250
Immunogen Region	180-260 Internal
Specificity	OR52B2 polyclonal antibody (Olfactory Receptor 52b2) binds to endogenous Olfactory Receptor 52b2 at the amino acid region 180-260 Internal.
Immunogen Sequence	



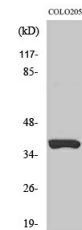
Western blot analysis of the lysates from HepG2 cells using OR52B2 antibody.



Immunofluorescence analysis of MCF7 cells, using OR52B2 Antibody. The picture on the right is blocked with the synthesized peptide.



Western blot analysis of lysates from COLO, HUVEC, and HepG2 cells, using OR52B2 Antibody. The lane on the right is blocked with the synthesized peptide.



Western blot analysis of various cells using Olfactory receptor 52B2 Polyclonal Antibody