

Anti-OR51F2 antibody (260-340 C-Term) (STJ94729)

STJ94729

GENERAL INFORMATION

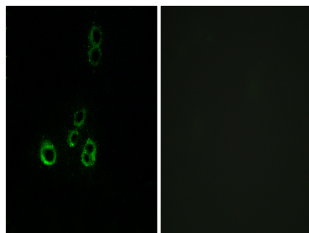
Product Type	Primary antibodies
Short Description	Rabbit polyclonal antibody anti-Olfactory Receptor 51f2 (260-340 C-Term) is suitable for use in Western Blot, Immunofluorescence, Immunocytochemistry and ELISA research applications.
Applications	WB, IF, ICC, ELISA
Host/Source	Rabbit
Reactivity	Human, Rat, Mouse

PRODUCT PROPERTIES

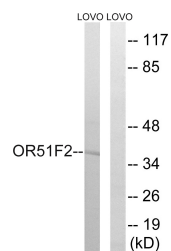
Clonality	Polyclonal
Clone ID	
Concentration	1 mg/mL
Conjugation	Unconjugated
Purification	The antibody was affinity-purified from rabbit anti-serum by affinity-chromatography.
Dilution Range	WB 1:500-1:2000 IF 1:200-1:1000 ELISA 1:5000
Formulation	PBS, 50% Glycerol, 0.5% BSA and 0.02% Sodium Azide.
Isotype	IgG
Storage Instruction	Store at -20°C for up to 1 year from the date of receipt, and avoid repeat freeze-thaw cycles.

TARGET INFORMATION

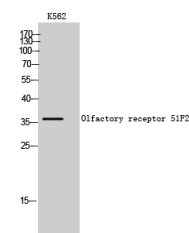
Gene ID	119694
Gene Symbol	OR51F2
Uniprot ID	O51F2_HUMAN
Immunogen	The antiserum was produced against synthesized peptide derived from human OR51F2 at amino acid range 292-341
Immunogen Region	260-340 C-Term
Specificity	OR51F2 polyclonal antibody (Olfactory Receptor 51f2) binds to endogenous Olfactory Receptor 51f2 at the amino acid region 260-340 C-Term.
Immunogen Sequence	



Immunofluorescence analysis of MCF7 cells, using OR51F2 Antibody. The picture on the right is blocked with the synthesized peptide.



Western blot analysis of lysates from LOVO cells, using OR51F2 Antibody. The lane on the right is blocked with the synthesized peptide.



Western blot analysis of K562 cells using Olfactory receptor 51F2 Polyclonal Antibody

This product is suitable for in-vitro studies under the RESEARCH USE ONLY [RUO] licence. This product must not be used as for diagnostic or other medical purposes.
St John's Laboratory Ltd, Knowledge Dock Business Centre, University Way, London, E16 2RD | Tel: 0208 223 3081