

Anti-OR51F1 antibody (240-320 C-Term) (STJ94728)

STJ94728

GENERAL INFORMATION

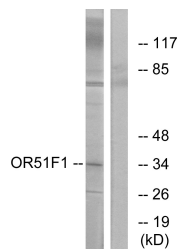
Product Type	Primary antibodies
Short Description	Rabbit polyclonal antibody anti-Olfactory Receptor 51f1 (240-320 C-Term) is suitable for use in Western Blot, Immunofluorescence, Immunocytochemistry and ELISA research applications.
Applications	WB, IF, ICC, ELISA
Host/Source	Rabbit
Reactivity	Human, Rat, Mouse

PRODUCT PROPERTIES

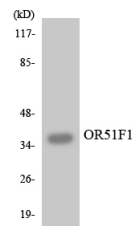
Clonality	Polyclonal
Clone ID	
Concentration	1 mg/mL
Conjugation	Unconjugated
Purification	The antibody was affinity-purified from rabbit anti-serum by affinity-chromatography.
Dilution Range	WB 1:500-1:2000 IF 1:200-1:1000 ELISA 1:10000
Formulation	PBS, 50% Glycerol, 0.5% BSA and 0.02% Sodium Azide.
Isotype	IgG
Storage Instruction	Store at -20°C for up to 1 year from the date of receipt, and avoid repeat freeze-thaw cycles.

TARGET INFORMATION

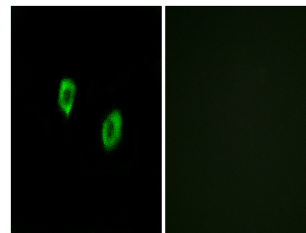
Gene ID	NA
Gene Symbol	OR51F1
Uniprot ID	O51F1_HUMAN
Immunogen	The antiserum was produced against synthesized peptide derived from human OR51F1 at amino acid range 269-318
Immunogen Region	240-320 C-Term
Specificity	OR51F1 polyclonal antibody (Olfactory Receptor 51f1) binds to endogenous Olfactory Receptor 51f1 at the amino acid region 240-320 C-Term.
Immunogen Sequence	



Western blot analysis of lysates from K562 cells, using OR51F1 Antibody. The lane on the right is blocked with the synthesized peptide.



Western blot analysis of the lysates from HepG2 cells using OR51F1 antibody.



Immunofluorescence analysis of COS7 cells, using OR51F1 Antibody. The picture on the right is blocked with the synthesized peptide.

This product is suitable for in-vitro studies under the RESEARCH USE ONLY [RUO] licence. This product must not be used as for diagnostic or other medical purposes.
St John's Laboratory Ltd, Knowledge Dock Business Centre, University Way, London, E16 2RD | Tel: 0208 223 3081